

CCNB2 antibody - N-terminal region
Rabbit Polyclonal Antibody
Catalog # AI14954**Specification**

CCNB2 antibody - N-terminal region - Product Information

Application	WB
Primary Accession	O95067
Other Accession	NM_004701 , NP_004692
Reactivity	Human, Rat, Rabbit, Horse, Bovine, Guinea Pig, Dog
Predicted Host	Human, Rabbit, Horse, Bovine, Dog
Clonality	Rabbit
Calculated MW	Polyclonal 45kDa KDa

CCNB2 antibody - N-terminal region - Additional Information**Gene ID** 9133**Alias Symbol** HsT17299
Other Names
G2/mitotic-specific cyclin-B2, CCNB2**Format**

Liquid. Purified antibody supplied in 1x PBS buffer with 0.09% (w/v) sodium azide and 2% sucrose.

Reconstitution & Storage

Add 50 ul of distilled water. Final anti-CCNB2 antibody concentration is 1 mg/ml in PBS buffer with 2% sucrose. For longer periods of storage, store at 20°C. Avoid repeat freeze-thaw cycles.

Precautions

CCNB2 antibody - N-terminal region is for research use only and not for use in diagnostic or therapeutic procedures.

CCNB2 antibody - N-terminal region - Protein Information**Name** CCNB2**Function**

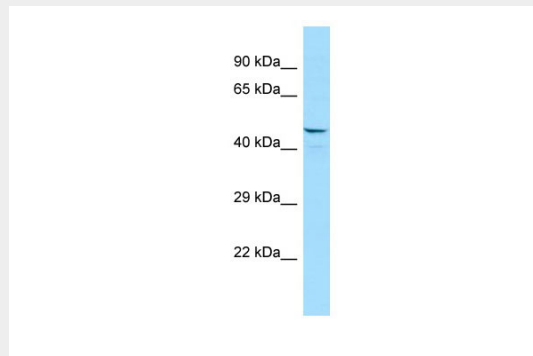
Essential for the control of the cell cycle at the G2/M (mitosis) transition.

CCNB2 antibody - N-terminal region - Protocols

Provided below are standard protocols that you may find useful for product applications.

- [Western Blot](#)
- [Blocking Peptides](#)
- [Dot Blot](#)
- [Immunohistochemistry](#)
- [Immunofluorescence](#)
- [Immunoprecipitation](#)
- [Flow Cytometry](#)
- [Cell Culture](#)

CCNB2 antibody - N-terminal region - Images



WB Suggested Anti-CCNB2 Antibody Titration: 1.0 μ g/ml
Positive Control: 293T Whole Cell

CCNB2 antibody - N-terminal region - References

Kim D.G., et al. Submitted (MAY-1997) to the EMBL/GenBank/DDBJ databases.
Saito T., et al. Submitted (DEC-1998) to the EMBL/GenBank/DDBJ databases.
Wiemann S., et al. Genome Res. 11:422-435(2001).
Ebert L., et al. Submitted (JUN-2004) to the EMBL/GenBank/DDBJ databases.
Ota T., et al. Nat. Genet. 36:40-45(2004).