

MC1R Antibody - C-terminal region
Rabbit Polyclonal Antibody
Catalog # AI14941**Specification**

MC1R Antibody - C-terminal region - Product Information

Application	WB
Primary Accession	Q01726
Other Accession	NM_002386 , NP_002377
Reactivity	Human, Mouse, Rat, Rabbit, Pig
Predicted	Human, Mouse, Rat, Rabbit, Pig
Host	Rabbit
Clonality	Polyclonal
Calculated MW	35kDa KDa

MC1R Antibody - C-terminal region - Additional Information**Gene ID** 4157**Alias Symbol** CMM5, MGC14337, MSH-R, SHEP2**Other Names**

Melanocyte-stimulating hormone receptor, MSH-R, Melanocortin receptor 1, MC1-R, MC1R, MSHR

Format

Liquid. Purified antibody supplied in 1x PBS buffer with 0.09% (w/v) sodium azide and 2% sucrose.

Reconstitution & Storage

Add 50 ul of distilled water. Final anti-MC1R antibody concentration is 1 mg/ml in PBS buffer with 2% sucrose. For longer periods of storage, store at 20°C. Avoid repeat freeze-thaw cycles.

Precautions

MC1R Antibody - C-terminal region is for research use only and not for use in diagnostic or therapeutic procedures.

MC1R Antibody - C-terminal region - Protein Information**Name** MC1R**Synonyms** MSHR**Function**Receptor for MSH (alpha, beta and gamma) and ACTH (PubMed:[11442765](http://www.uniprot.org/citations/11442765)), PubMed:[11707265](http://www.uniprot.org/citations/11707265)), PubMed:[1325670](http://www.uniprot.org/citations/1325670)), PubMed:[1516719](http://www.uniprot.org/citations/1516719)), PubMed:[8463333](http://www.uniprot.org/citations/8463333)). The activity of this receptor is mediated by G proteins which activate adenylate cyclase (PubMed:[11442765](http://www.uniprot.org/citations/11442765)).

href="http://www.uniprot.org/citations/11707265" target="_blank">11707265, PubMed:1325670, PubMed:16463023, PubMed:19737927). Mediates melanogenesis, the production of eumelanin (black/brown) and pheomelanin (red/yellow), via regulation of cAMP signaling in melanocytes (PubMed:31097585).

Cellular Location

Cell membrane; Multi-pass membrane protein

Tissue Location

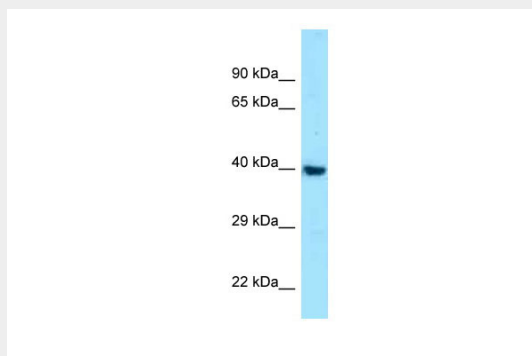
Expressed in melanocytes (PubMed:1325670, PubMed:31097585). Expressed in corticoadrenal tissue (PubMed:1325670)

MC1R Antibody - C-terminal region - Protocols

Provided below are standard protocols that you may find useful for product applications.

- [Western Blot](#)
- [Blocking Peptides](#)
- [Dot Blot](#)
- [Immunohistochemistry](#)
- [Immunofluorescence](#)
- [Immunoprecipitation](#)
- [Flow Cytometry](#)
- [Cell Culture](#)

MC1R Antibody - C-terminal region - Images



WB Suggested Anti-MC1R Antibody Titration: 1.0 µg/ml
Positive Control: HepG2 Whole Cell

MC1R Antibody - C-terminal region - References

Mountjoy K.G., et al. Science 257:1248-1251(1992).
Gantz I., et al. J. Biol. Chem. 268:8246-8250(1993).
Chhajlani V., et al. FEBS Lett. 309:417-420(1992).
Chhajlani V., et al. FEBS Lett. 390:238-238(1996).
Rana B.K., et al. Genetics 151:1547-1557(1999).