

UCP1 antibody - N-terminal region
Rabbit Polyclonal Antibody
Catalog # AI14934**Specification**

UCP1 antibody - N-terminal region - Product Information

Application	WB
Primary Accession	P25874
Other Accession	NM_021833 , NP_068605
Reactivity	Human, Rabbit
Predicted	Human
Host	Rabbit
Clonality	Polyclonal
Calculated MW	34kDa KDa

UCP1 antibody - N-terminal region - Additional Information**Gene ID** 7350**Alias Symbol** **SLC25A7, UCP****Other Names**

Mitochondrial brown fat uncoupling protein 1, UCP 1, Solute carrier family 25 member 7, Thermogenin, UCP1, SLC25A7, UCP

Format

Liquid. Purified antibody supplied in 1x PBS buffer with 0.09% (w/v) sodium azide and 2% sucrose.

Reconstitution & Storage

Add 50 ul of distilled water. Final anti-UCP1 antibody concentration is 1 mg/ml in PBS buffer with 2% sucrose. For longer periods of storage, store at 20°C. Avoid repeat freeze-thaw cycles.

Precautions

UCP1 antibody - N-terminal region is for research use only and not for use in diagnostic or therapeutic procedures.

UCP1 antibody - N-terminal region - Protein Information**Name** UCP1 ([HGNC:12517](#))**Function**

Mitochondrial protein responsible for thermogenic respiration, a specialized capacity of brown adipose tissue and beige fat that participates in non-shivering adaptive thermogenesis to temperature and diet variations and more generally to the regulation of energy balance (By similarity). Functions as a long-chain fatty acid/LCFA and proton symporter, simultaneously transporting one LCFA and one proton through the inner mitochondrial membrane (PubMed:24196960, PubMed:28781081). However, LCFAs remaining associated with the transporter via their hydrophobic tails, it results in an

apparent transport of protons activated by LCFAs. Thereby, dissipates the mitochondrial proton gradient and converts the energy of substrate oxidation into heat instead of ATP. Regulates the production of reactive oxygen species/ROS by mitochondria (By similarity).

Cellular Location

Mitochondrion inner membrane {ECO:0000250|UniProtKB:P12242}; Multi-pass membrane protein

Tissue Location

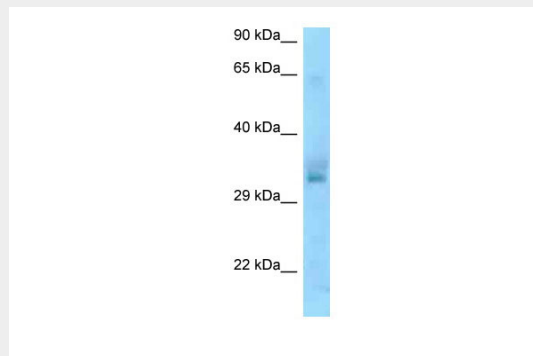
Brown adipose tissue..

UCP1 antibody - N-terminal region - Protocols

Provided below are standard protocols that you may find useful for product applications.

- [Western Blot](#)
- [Blocking Peptides](#)
- [Dot Blot](#)
- [Immunohistochemistry](#)
- [Immunofluorescence](#)
- [Immunoprecipitation](#)
- [Flow Cytometry](#)
- [Cell Culture](#)

UCP1 antibody - N-terminal region - Images



WB Suggested Anti-UCP1 Antibody Titration: 1.0 µg/ml
Positive Control: Jurkat Whole Cell

UCP1 antibody - N-terminal region - References

Cassard A.M., et al. *J. Cell. Biochem.* 43:255-264(1990).
Bouillaud F., et al. Submitted (JUL-1995) to the EMBL/GenBank/DDBJ databases.
Bouillaud F., et al. Submitted (JUL-1995) to the EMBL/GenBank/DDBJ databases.
Hillier L.W., et al. *Nature* 434:724-731(2005).
Bouillaud F., et al. *Clin. Sci.* 75:21-27(1988).