

C17orf66 Antibody - middle region
Rabbit Polyclonal Antibody
Catalog # AI14928**Specification**

C17orf66 Antibody - middle region - Product Information

Application	WB
Primary Accession	A2RTY3-4
Reactivity	Human, Horse, Guinea Pig
Predicted	Human, Horse, Guinea Pig
Host	Rabbit
Clonality	Polyclonal
Calculated MW	41kDa KDa

C17orf66 Antibody - middle region - Additional Information**Format**

Liquid. Purified antibody supplied in 1x PBS buffer with 0.09% (w/v) sodium azide and 2% sucrose.

Reconstitution & Storage

Add 50 ul of distilled water. Final anti-C17orf66 antibody concentration is 1 mg/ml in PBS buffer with 2% sucrose. For longer periods of storage, store at 20°C. Avoid repeat freeze-thaw cycles.

Precautions

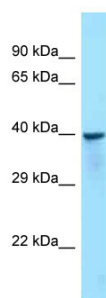
C17orf66 Antibody - middle region is for research use only and not for use in diagnostic or therapeutic procedures.

C17orf66 Antibody - middle region - Protein Information**C17orf66 Antibody - middle region - Protocols**

Provided below are standard protocols that you may find useful for product applications.

- [Western Blot](#)
- [Blocking Peptides](#)
- [Dot Blot](#)
- [Immunohistochemistry](#)
- [Immunofluorescence](#)
- [Immunoprecipitation](#)
- [Flow Cytometry](#)
- [Cell Culture](#)

C17orf66 Antibody - middle region - Images

Host: Rabbit
Target Name: C17orf66
Sample Tissue: NCI-H226 Whole cell lysate
S
Antibody Dilution: 1.0µg/ml