

CD1A antibody - C-terminal region
Rabbit Polyclonal Antibody
Catalog # AI14912

Specification

CD1A antibody - C-terminal region - Product Information

Application	WB
Primary Accession	P06126
Other Accession	NM_001763 , NP_001754
Reactivity	Human, Mouse, Rat, Pig, Sheep, Horse, Bovine, Guinea Pig, Dog
Predicted Host	Human, Pig, Horse, Bovine, Dog
Clonality	Rabbit
Calculated MW	Polyclonal 37kDa KDa

CD1A antibody - C-terminal region - Additional Information

Gene ID 909

Alias Symbol **CD1, FCB6, HTA1, R4, T6**
Other Names

T-cell surface glycoprotein CD1a, T-cell surface antigen T6/Leu-6, hTa1 thymocyte antigen, CD1a, CD1A

Format

Liquid. Purified antibody supplied in 1x PBS buffer with 0.09% (w/v) sodium azide and 2% sucrose.

Reconstitution & Storage

Add 50 ul of distilled water. Final anti-CD1A antibody concentration is 1 mg/ml in PBS buffer with 2% sucrose. For longer periods of storage, store at 20°C. Avoid repeat freeze-thaw cycles.

Precautions

CD1A antibody - C-terminal region is for research use only and not for use in diagnostic or therapeutic procedures.

CD1A antibody - C-terminal region - Protein Information

Name CD1A

Function

Antigen-presenting protein that binds self and non-self lipid and glycolipid antigens and presents them to T-cell receptors on natural killer T-cells.

Cellular Location

Cell membrane; Single-pass type I membrane protein. Membrane raft; Single-pass type I membrane protein. Endosome membrane; Single-pass type I membrane protein. Note=Subject to intracellular trafficking between the cell membrane and endosomes (PubMed:11231314). Localizes

to cell surface lipid rafts (PubMed:18178838).

Tissue Location

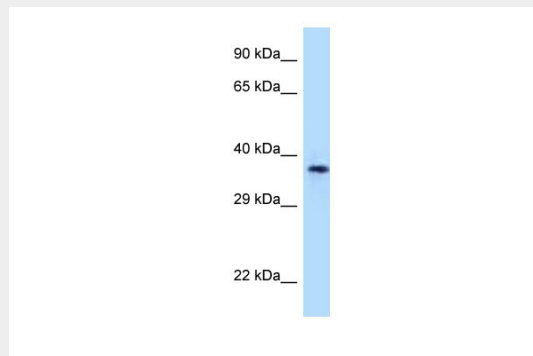
Expressed on cortical thymocytes, epidermal Langerhans cells, dendritic cells, on certain T-cell leukemias, and in various other tissues.

CD1A antibody - C-terminal region - Protocols

Provided below are standard protocols that you may find useful for product applications.

- [Western Blot](#)
- [Blocking Peptides](#)
- [Dot Blot](#)
- [Immunohistochemistry](#)
- [Immunofluorescence](#)
- [Immunoprecipitation](#)
- [Flow Cytometry](#)
- [Cell Culture](#)

CD1A antibody - C-terminal region - Images



WB Suggested Anti-CD1A Antibody Titration: 1.0 µg/ml
Positive Control: 721_B Whole Cell

CD1A antibody - C-terminal region - References

- Aruffo A., et al. J. Immunol. 143:1723-1730(1989).
Martin L.H., et al. Proc. Natl. Acad. Sci. U.S.A. 84:9189-9193(1987).
Ota T., et al. Nat. Genet. 36:40-45(2004).
Gregory S.G., et al. Nature 441:315-321(2006).
Mural R.J., et al. Submitted (SEP-2005) to the EMBL/GenBank/DDBJ databases.