

SELL antibody - C-terminal region
Rabbit Polyclonal Antibody
Catalog # AI14908**Specification**

SELL antibody - C-terminal region - Product Information

Application	WB
Primary Accession	P14151
Other Accession	NM_000655 , NP_000646
Reactivity	Human, Pig
Predicted	Human, Pig
Host	Rabbit
Clonality	Polyclonal
Calculated MW	41kDa KDa

SELL antibody - C-terminal region - Additional Information**Gene ID** 6402**Alias Symbol** **CD62L, LAM1, LECAM1, LEU8, LNHR, LSEL, LYAM1, PLNHR, TQ1****Other Names**

L-selectin, CD62 antigen-like family member L, Leukocyte adhesion molecule 1, LAM-1, Leukocyte surface antigen Leu-8, Leukocyte-endothelial cell adhesion molecule 1, LECAM1, Lymph node homing receptor, TQ1, gp90-MEL, CD62L, SELL, LNHR, LYAM1

Format

Liquid. Purified antibody supplied in 1x PBS buffer with 0.09% (w/v) sodium azide and 2% sucrose.

Reconstitution & Storage

Add 50 ul of distilled water. Final anti-SELL antibody concentration is 1 mg/ml in PBS buffer with 2% sucrose. For longer periods of storage, store at 20°C. Avoid repeat freeze-thaw cycles.

Precautions

SELL antibody - C-terminal region is for research use only and not for use in diagnostic or therapeutic procedures.

SELL antibody - C-terminal region - Protein Information**Name** SELL**Synonyms** LNHR, LYAM1**Function**Calcium-dependent lectin that mediates cell adhesion by binding to glycoproteins on neighboring cells (PubMed: <http://www.uniprot.org/citations/12403782> target="_blank">12403782, PubMed: <http://www.uniprot.org/citations/28011641> target="_blank">28011641, PubMed: <http://www.uniprot.org/citations/28489325>)

target="_blank">28489325). Mediates the adherence of lymphocytes to endothelial cells of high endothelial venules in peripheral lymph nodes. Promotes initial tethering and rolling of leukocytes in endothelia (PubMed:12403782, PubMed:28011641).

Cellular Location

Cell membrane; Single-pass type I membrane protein

Tissue Location

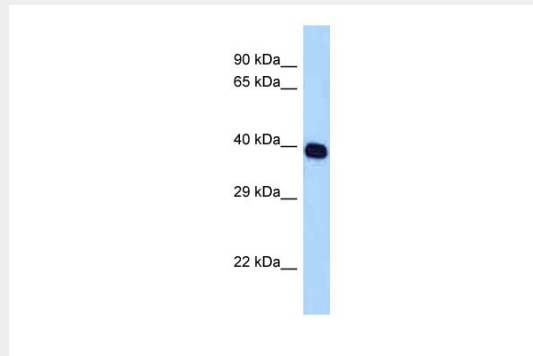
Expressed in B-cell lines and T-lymphocytes.

SELL antibody - C-terminal region - Protocols

Provided below are standard protocols that you may find useful for product applications.

- [Western Blot](#)
- [Blocking Peptides](#)
- [Dot Blot](#)
- [Immunohistochemistry](#)
- [Immunofluorescence](#)
- [Immunoprecipitation](#)
- [Flow Cytometry](#)
- [Cell Culture](#)

SELL antibody - C-terminal region - Images



WB Suggested Anti-SELL Antibody Titration: 1.0 µg/ml
Positive Control: HepG2 Whole Cell

SELL antibody - C-terminal region - References

- Siegelman M.H., et al. Proc. Natl. Acad. Sci. U.S.A. 86:5562-5566(1989).
Tedder T.F., et al. J. Exp. Med. 170:123-133(1989).
Camerini D., et al. Nature 342:78-82(1989).
Bowen B.R., et al. J. Cell Biol. 109:421-427(1989).
Ord D.C., et al. J. Biol. Chem. 265:7760-7767(1990).