

SEC13 Antibody - C-terminal region
Rabbit Polyclonal Antibody
Catalog # AI14887**Specification**

SEC13 Antibody - C-terminal region - Product Information

Application	WB
Primary Accession	P55735
Other Accession	NM_183352 , NP_899195
Reactivity	Human, Mouse, Rat, Rabbit, Horse, Bovine, Guinea Pig, Dog
Predicted	Human, Mouse, Rat, Rabbit, Horse, Bovine, Guinea Pig, Dog
Host	Rabbit
Clonality	Polyclonal
Calculated MW	35kDa kDa

SEC13 Antibody - C-terminal region - Additional Information**Gene ID** 6396**Alias Symbol** D3S1231E, SEC13L1, SEC13R, npp-20**Other Names**

Protein SEC13 homolog, SEC13-like protein 1, SEC13-related protein, SEC13, D3S1231E, SEC13L1, SEC13R

Format

Liquid. Purified antibody supplied in 1x PBS buffer with 0.09% (w/v) sodium azide and 2% sucrose.

Reconstitution & Storage

Add 50 µl of distilled water. Final Anti-SEC13 antibody concentration is 1 mg/ml in PBS buffer with 2% sucrose. For longer periods of storage, store at -20°C. Avoid repeat freeze-thaw cycles.

Precautions

SEC13 Antibody - C-terminal region is for research use only and not for use in diagnostic or therapeutic procedures.

SEC13 Antibody - C-terminal region - Protein Information**Name** SEC13**Function**Functions as a component of the nuclear pore complex (NPC) and the COPII coat (PubMed: [8972206](http://www.uniprot.org/citations/8972206)). At the endoplasmic reticulum, SEC13 is involved in the biogenesis of COPII-coated vesicles (PubMed: [8972206](http://www.uniprot.org/citations/8972206)). Required for the exit of adipsin (CFD/ADN), an adipocyte-secreted protein from the endoplasmic reticulum (By similarity).

Cellular Location

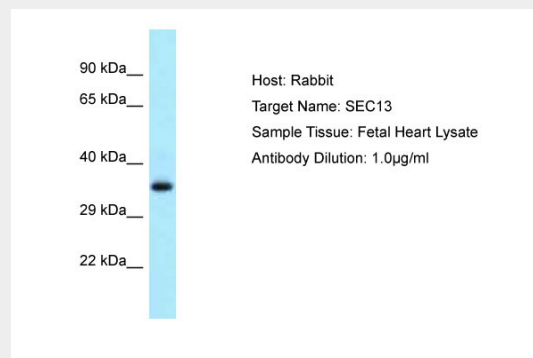
Cytoplasmic vesicle, COPII-coated vesicle membrane; Peripheral membrane protein; Cytoplasmic side. Endoplasmic reticulum membrane; Peripheral membrane protein; Cytoplasmic side. Nucleus, nuclear pore complex. Lysosome membrane. Note=In interphase, localizes at both sides of the NPC.

SEC13 Antibody - C-terminal region - Protocols

Provided below are standard protocols that you may find useful for product applications.

- [Western Blot](#)
- [Blocking Peptides](#)
- [Dot Blot](#)
- [Immunohistochemistry](#)
- [Immunofluorescence](#)
- [Immunoprecipitation](#)
- [Flow Cytometry](#)
- [Cell Culture](#)

SEC13 Antibody - C-terminal region - Images



Host: Rabbit
Target Name: SEC13
Sample Tissue: Fetal Heart lysates
Antibody Dilution: 1.0µg/ml

SEC13 Antibody - C-terminal region - References

- Swaroop A., et al. Hum. Mol. Genet. 3:1281-1286(1994).
Yu W., et al. Genome Res. 7:353-358(1997).
Ota T., et al. Nat. Genet. 36:40-45(2004).
Muzny D.M., et al. Nature 440:1194-1198(2006).
Gevaert K., et al. Nat. Biotechnol. 21:566-569(2003).