

CENPV antibody - C-terminal region
Rabbit Polyclonal Antibody
Catalog # AI14885

Specification

CENPV antibody - C-terminal region - Product Information

Application	WB
Primary Accession	Q7Z7K6
Other Accession	NM_181716 , NP_859067
Reactivity	Human, Mouse, Rat, Rabbit, Pig, Horse, Bovine, Dog
Predicted	Human, Mouse, Rat, Rabbit, Pig, Horse, Bovine, Dog
Host	Rabbit
Clonality	Polyclonal
Calculated MW	30kDa KDa

CENPV antibody - C-terminal region - Additional Information

Gene ID 201161

Alias Symbol 3110013H01Rik, CENP-V, PRR6, p30

Other Names

Centromere protein V, CENP-V, Nuclear protein p30, Proline-rich protein 6, CENPV, PRR6

Format

Liquid. Purified antibody supplied in 1x PBS buffer with 0.09% (w/v) sodium azide and 2% sucrose.

Reconstitution & Storage

Add 50 ul of distilled water. Final anti-CENPV antibody concentration is 1 mg/ml in PBS buffer with 2% sucrose. For longer periods of storage, store at 20°C. Avoid repeat freeze-thaw cycles.

Precautions

CENPV antibody - C-terminal region is for research use only and not for use in diagnostic or therapeutic procedures.

CENPV antibody - C-terminal region - Protein Information

Name CENPV

Synonyms PRR6

Function

Required for distribution of pericentromeric heterochromatin in interphase nuclei and for centromere formation and organization, chromosome alignment and cytokinesis.

Cellular Location

Chromosome, centromere, kinetochore. Nucleus Cytoplasm, cytoskeleton, spindle Note=Enriched

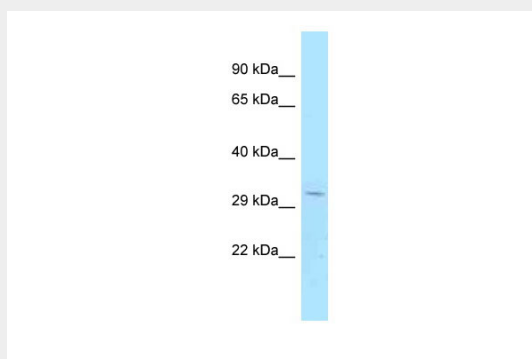
at the nuclear periphery and around the nucleolus (PubMed:12196509). In mitotic cells, localizes to kinetochores from prometaphase to metaphase (PubMed:18772885). At anaphase onset, transfers to the spindle midzone and then to the mid-body in telophase and cytokinesis (PubMed:18772885)

CENPV antibody - C-terminal region - Protocols

Provided below are standard protocols that you may find useful for product applications.

- [Western Blot](#)
- [Blocking Peptides](#)
- [Dot Blot](#)
- [Immunohistochemistry](#)
- [Immunofluorescence](#)
- [Immunoprecipitation](#)
- [Flow Cytometry](#)
- [Cell Culture](#)

CENPV antibody - C-terminal region - Images



WB Suggested Anti-CENPV Antibody Titration: 1.0 µg/ml
Positive Control: Fetal Lung

CENPV antibody - C-terminal region - References

Zheng H., et al. Submitted (SEP-2003) to the EMBL/GenBank/DDBJ databases.
Cronshaw J.M., et al. J. Cell Biol. 158:915-927(2002).
Tadeu A.M.B., et al. EMBO J. 27:2510-2522(2008).
Dephoure N., et al. Proc. Natl. Acad. Sci. U.S.A. 105:10762-10767(2008).
Mayya V., et al. Sci. Signal. 2:RA46-RA46(2009).