

MAGEF1 antibody - N-terminal region
Rabbit Polyclonal Antibody
Catalog # AI14878**Specification**

MAGEF1 antibody - N-terminal region - Product Information

Application	WB
Primary Accession	O9HAY2
Other Accession	NM_022149 , NP_071432
Reactivity	Human
Predicted	Human
Host	Rabbit
Clonality	Polyclonal
Calculated MW	34kDa KDa

MAGEF1 antibody - N-terminal region - Additional Information**Gene ID** 64110**Alias Symbol** MGC19617**Other Names**

Melanoma-associated antigen F1, MAGE-F1 antigen, MAGEF1

Format

Liquid. Purified antibody supplied in 1x PBS buffer with 0.09% (w/v) sodium azide and 2% sucrose.

Reconstitution & Storage

Add 50 ul of distilled water. Final anti-MAGEF1 antibody concentration is 1 mg/ml in PBS buffer with 2% sucrose. For longer periods of storage, store at 20°C. Avoid repeat freeze-thaw cycles.

Precautions

MAGEF1 antibody - N-terminal region is for research use only and not for use in diagnostic or therapeutic procedures.

MAGEF1 antibody - N-terminal region - Protein Information**Name** MAGEF1 ([HGNC:29639](#))**Function**

Enhances ubiquitin ligase activity of RING-type zinc finger- containing E3 ubiquitin ligases. Proposed to act through recruitment and/or stabilization of the E2 ubiquitin-conjugating enzyme at the E3:substrate complex. MAGEF1-NSMCE1 ubiquitin ligase complex promotes proteasomal degradation of MMS19, a key component of the cytosolic iron-sulfur protein assembly (CIA) machinery. Down-regulation of MMS19 impairs the activity of several DNA repair and metabolism enzymes such as ERCC2/XPD, FANCI, RTEL1 and POLD1 that require iron-sulfur clusters as cofactors. May negatively regulate genome integrity by inhibiting homologous recombination-mediated double-strand break DNA repair (PubMed:29225034).

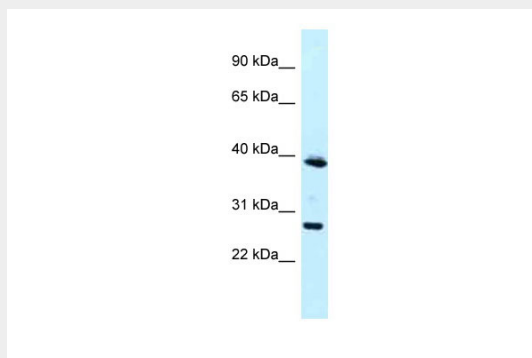
Tissue Location

Ubiquitous..

MAGEF1 antibody - N-terminal region - Protocols

Provided below are standard protocols that you may find useful for product applications.

- [Western Blot](#)
- [Blocking Peptides](#)
- [Dot Blot](#)
- [Immunohistochemistry](#)
- [Immunofluorescence](#)
- [Immunoprecipitation](#)
- [Flow Cytometry](#)
- [Cell Culture](#)

MAGEF1 antibody - N-terminal region - Images

WB Suggested Anti-MAGEF1 Antibody Titration: 1.0 µg/ml
Positive Control: Jurkat Whole Cell

MAGEF1 antibody - N-terminal region - References

Stone B., et al. Gene 267:173-182(2001).
Muzny D.M., et al. Nature 440:1194-1198(2006).
Chomez P., et al. Cancer Res. 61:5544-5551(2001).
Doyle J.M., et al. Mol. Cell 39:963-974(2010).