

**MAGEF1 antibody - C-terminal region**  
**Rabbit Polyclonal Antibody**  
**Catalog # AI14877****Specification**

---

**MAGEF1 antibody - C-terminal region - Product Information**

Application	WB
Primary Accession	<a href="#">O9HAY2</a>
Other Accession	<a href="#">NM_022149</a> , <a href="#">NP_071432</a>
Reactivity	Human, Rabbit, Pig, Bovine, Dog
Predicted	Bovine, Dog
Host	Rabbit
Clonality	Polyclonal
Calculated MW	34kDa KDa

**MAGEF1 antibody - C-terminal region - Additional Information****Gene ID** 64110**Alias Symbol** **MGC19617****Other Names**

Melanoma-associated antigen F1, MAGE-F1 antigen, MAGEF1

**Format**

Liquid. Purified antibody supplied in 1x PBS buffer with 0.09% (w/v) sodium azide and 2% sucrose.

**Reconstitution & Storage**

Add 50 ul of distilled water. Final anti-MAGEF1 antibody concentration is 1 mg/ml in PBS buffer with 2% sucrose. For longer periods of storage, store at 20°C. Avoid repeat freeze-thaw cycles.

**Precautions**

MAGEF1 antibody - C-terminal region is for research use only and not for use in diagnostic or therapeutic procedures.

**MAGEF1 antibody - C-terminal region - Protein Information****Name** MAGEF1 ([HGNC:29639](#))**Function**

Enhances ubiquitin ligase activity of RING-type zinc finger- containing E3 ubiquitin ligases. Proposed to act through recruitment and/or stabilization of the E2 ubiquitin-conjugating enzyme at the E3:substrate complex. MAGEF1-NSMCE1 ubiquitin ligase complex promotes proteasomal degradation of MMS19, a key component of the cytosolic iron-sulfur protein assembly (CIA) machinery. Down-regulation of MMS19 impairs the activity of several DNA repair and metabolism enzymes such as ERCC2/XPD, FANCI, RTEL1 and POLD1 that require iron-sulfur clusters as cofactors. May negatively regulate genome integrity by inhibiting homologous recombination-mediated double-strand break DNA repair (PubMed:<a href="http://www.uniprot.org/citations/29225034" target="\_blank">29225034</a>).

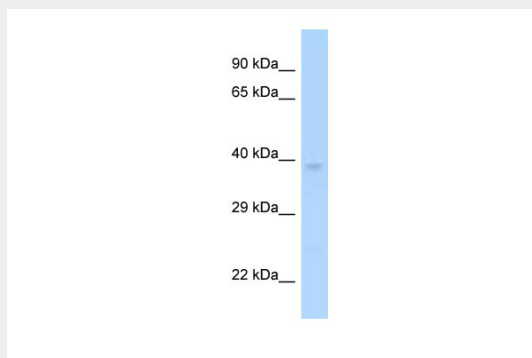
**Tissue Location**

Ubiquitous..

**MAGEF1 antibody - C-terminal region - Protocols**

Provided below are standard protocols that you may find useful for product applications.

- [Western Blot](#)
- [Blocking Peptides](#)
- [Dot Blot](#)
- [Immunohistochemistry](#)
- [Immunofluorescence](#)
- [Immunoprecipitation](#)
- [Flow Cytometry](#)
- [Cell Culture](#)

**MAGEF1 antibody - C-terminal region - Images**

WB Suggested Anti-MAGEF1 Antibody Titration: 1.0 µg/ml

Positive Control: NCI-H226 Whole Cell MAGEF1 is supported by BioGPS gene expression data to be expressed in NCIH226

**MAGEF1 antibody - C-terminal region - References**

- Stone B., et al. Gene 267:173-182(2001).  
Muzny D.M., et al. Nature 440:1194-1198(2006).  
Chomez P., et al. Cancer Res. 61:5544-5551(2001).  
Doyle J.M., et al. Mol. Cell 39:963-974(2010).