

GPR52 antibody - C-terminal region
Rabbit Polyclonal Antibody
Catalog # AI14870

Specification

GPR52 antibody - C-terminal region - Product Information

Application	WB
Primary Accession	O9Y2T5
Other Accession	NM_005684 , NP_005675
Reactivity	Human, Mouse, Rat, Pig, Bovine, Guinea Pig
Predicted Host	Human, Mouse, Bovine, Guinea Pig
Clonality	Rabbit
Calculated MW	Polyclonal 40kDa KDa

GPR52 antibody - C-terminal region - Additional Information

Gene ID 9293

Alias Symbol MGC111751
Other Names
Probable G-protein coupled receptor 52, GPR52

Format

Liquid. Purified antibody supplied in 1x PBS buffer with 0.09% (w/v) sodium azide and 2% sucrose.

Reconstitution & Storage

Add 50 ul of distilled water. Final anti-GPR52 antibody concentration is 1 mg/ml in PBS buffer with 2% sucrose. For longer periods of storage, store at 20°C. Avoid repeat freeze-thaw cycles.

Precautions

GPR52 antibody - C-terminal region is for research use only and not for use in diagnostic or therapeutic procedures.

GPR52 antibody - C-terminal region - Protein Information

Name GPR52 {ECO:0000303|PubMed:9931487, ECO:0000312|HGNC:HGNC:4508}

Function

Gs-coupled receptor activated by antipsychotics reserpine leading to an increase in intracellular cAMP and its internalization (PubMed:24587241). May play a role in locomotor activity through modulation of dopamine, NMDA and ADORA2A-induced locomotor activity. These behavioral changes are accompanied by modulation of the dopamine receptor signaling pathway in striatum (PubMed:24587241). Modulates HTT level via cAMP-dependent but PKA independent mechanisms through activation of RAB39B that translocates HTT to the endoplasmic reticulum, thus avoiding proteasome degradation

(PubMed:25738228).

Cellular Location

Cell membrane; Multi-pass membrane protein.

Tissue Location

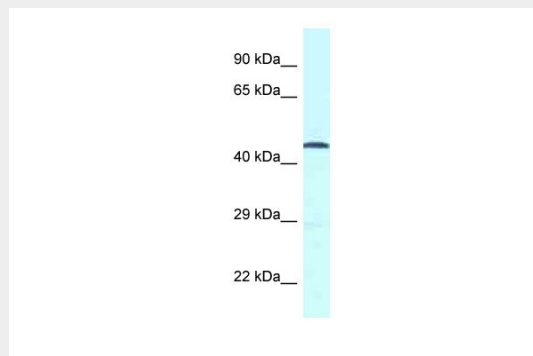
Expressed in brain, especially in striatum.

GPR52 antibody - C-terminal region - Protocols

Provided below are standard protocols that you may find useful for product applications.

- [Western Blot](#)
- [Blocking Peptides](#)
- [Dot Blot](#)
- [Immunohistochemistry](#)
- [Immunofluorescence](#)
- [Immunoprecipitation](#)
- [Flow Cytometry](#)
- [Cell Culture](#)

GPR52 antibody - C-terminal region - Images



WB Suggested Anti-GPR52 Antibody Titration: 1.0 µg/ml

Positive Control: Fetal Heart

GPR52 antibody - C-terminal region - References

Sawzdargo M., et al. Brain Res. Mol. Brain Res. 64:193-198(1999).

Gregory S.G., et al. Nature 441:315-321(2006).