

Mpp6 Antibody - C-terminal region
Rabbit Polyclonal Antibody
Catalog # AI14859

Specification

Mpp6 Antibody - C-terminal region - Product Information

Application	WB
Primary Accession	O9JLB0
Reactivity	Human, Mouse, Rat, Rabbit, Pig, Horse, Bovine, Guinea Pig, Dog
Predicted	Human, Mouse, Rat, Rabbit, Pig, Horse, Bovine, Guinea Pig, Dog
Host	Rabbit
Clonality	Polyclonal
Calculated MW	60kDa KDa

Mpp6 Antibody - C-terminal region - Additional Information

Gene ID 56524

Other Names

MAGUK p55 subfamily member 6, Dlgh4 protein, P55T protein, Protein associated with Lin-7 2, Mpp6, Dlgh4, Pals2

Format

Liquid. Purified antibody supplied in 1x PBS buffer with 0.09% (w/v) sodium azide and 2% sucrose.

Reconstitution & Storage

Add 50 ul of distilled water. Final anti-Mpp6 antibody concentration is 1 mg/ml in PBS buffer with 2% sucrose. For longer periods of storage, store at 20°C. Avoid repeat freeze-thaw cycles.

Precautions

Mpp6 Antibody - C-terminal region is for research use only and not for use in diagnostic or therapeutic procedures.

Mpp6 Antibody - C-terminal region - Protein Information

Name Pals2 {ECO:0000303|PubMed:10753959, ECO:0000312|MGI:MGI:1927340}

Cellular Location

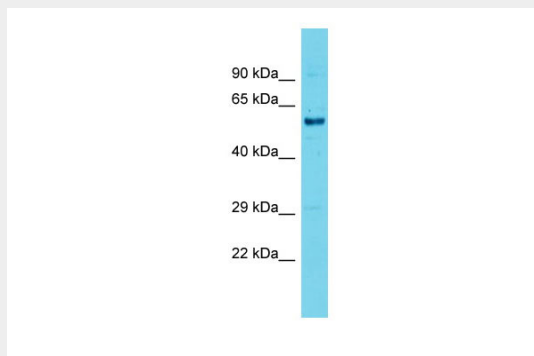
Membrane; Peripheral membrane protein.

Mpp6 Antibody - C-terminal region - Protocols

Provided below are standard protocols that you may find useful for product applications.

- [Western Blot](#)
- [Blocking Peptides](#)
- [Dot Blot](#)
- [Immunohistochemistry](#)
- [Immunofluorescence](#)
- [Immunoprecipitation](#)
- [Flow Cytometry](#)
- [Cell Culture](#)

Mpp6 Antibody - C-terminal region - Images



Host: Rabbit

Target Name: Mpp6

Sample Tissue: Mouse Testis lysates

Antibody Dilution: 1.0µg/ml

Mpp6 Antibody - C-terminal region - References

Kamberov E., et al. J. Biol. Chem. 275:11425-11431(2000).

Lin L., et al. Submitted (JUN-1999) to the EMBL/GenBank/DDBJ databases.

Shingai T., et al. J. Biol. Chem. 278:35421-35427(2003).