

RASL11B antibody - C-terminal region
Rabbit Polyclonal Antibody
Catalog # AI14821**Specification**

RASL11B antibody - C-terminal region - Product Information

Application	WB
Primary Accession	O9BPW5
Other Accession	NM_023940 , NP_076429
Reactivity	Human, Mouse, Rat, Rabbit, Pig, Horse, Bovine, Guinea Pig, Dog
Predicted Host	Rabbit, Chicken, Guinea Pig
Clonality	Rabbit
Calculated MW	Polyclonal 27kDa KDa

RASL11B antibody - C-terminal region - Additional Information**Gene ID** 65997**Alias Symbol** MGC2827, MGC4499**Other Names**

Ras-like protein family member 11B, RASL11B {ECO:0000312|EMBL:AAH01846.1}

Format

Liquid. Purified antibody supplied in 1x PBS buffer with 0.09% (w/v) sodium azide and 2% sucrose.

Reconstitution & Storage

Add 50 ul of distilled water. Final anti-RASL11B antibody concentration is 1 mg/ml in PBS buffer with 2% sucrose. For longer periods of storage, store at 20°C. Avoid repeat freeze-thaw cycles.

Precautions

RASL11B antibody - C-terminal region is for research use only and not for use in diagnostic or therapeutic procedures.

RASL11B antibody - C-terminal region - Protein Information**Name** RASL11B {ECO:0000312|EMBL:AAH01846.1}**Tissue Location**

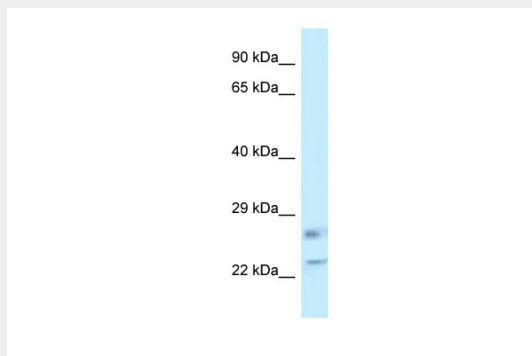
Widely expressed with highest levels in placenta and primary macrophages.

RASL11B antibody - C-terminal region - Protocols

Provided below are standard protocols that you may find useful for product applications.

- [Western Blot](#)
- [Blocking Peptides](#)
- [Dot Blot](#)
- [Immunohistochemistry](#)
- [Immunofluorescence](#)
- [Immunoprecipitation](#)
- [Flow Cytometry](#)
- [Cell Culture](#)

RASL11B antibody - C-terminal region - Images



WB Suggested Anti-RASL11B Antibody Titration: 1.0 µg/ml
Positive Control: Placenta

RASL11B antibody - C-terminal region - References

- Stolle K., et al. *Biochim. Biophys. Acta* 1769:514-524(2007).
Ota T., et al. *Nat. Genet.* 36:40-45(2004).
Mural R.J., et al. Submitted (JUL-2005) to the EMBL/GenBank/DDBJ databases.
Louro R., et al. *Biochem. Biophys. Res. Commun.* 316:618-627(2004).