

**LY6G5B antibody - N-terminal region**  
**Rabbit Polyclonal Antibody**  
**Catalog # AI14819**

**Specification**

---

**LY6G5B antibody - N-terminal region - Product Information**

Application	WB
Primary Accession	<a href="#">Q8NDX9</a>
Other Accession	<a href="#">NM_021221</a> , <a href="#">NP_067044</a>
Reactivity	Human, Pig, Horse, Dog
Predicted	Human, Pig, Horse
Host	Rabbit
Clonality	Polyclonal
Calculated MW	22kDa KDa

**LY6G5B antibody - N-terminal region - Additional Information**

**Gene ID** 58496

**Alias Symbol** C6orf19, G5b

**Other Names**

Lymphocyte antigen 6 complex locus protein G5b, LY6G5B, C6orf19, G5B

**Format**

Liquid. Purified antibody supplied in 1x PBS buffer with 0.09% (w/v) sodium azide and 2% sucrose.

**Reconstitution & Storage**

Add 50 ul of distilled water. Final anti-LY6G5B antibody concentration is 1 mg/ml in PBS buffer with 2% sucrose. For longer periods of storage, store at 20°C. Avoid repeat freeze-thaw cycles.

**Precautions**

LY6G5B antibody - N-terminal region is for research use only and not for use in diagnostic or therapeutic procedures.

**LY6G5B antibody - N-terminal region - Protein Information**

**Name** LY6G5B

**Synonyms** C6orf19, G5B

**Cellular Location**

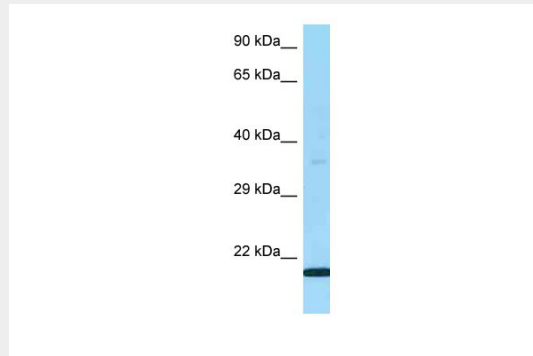
Secreted.

**LY6G5B antibody - N-terminal region - Protocols**

Provided below are standard protocols that you may find useful for product applications.

- [Western Blot](#)
- [Blocking Peptides](#)
- [Dot Blot](#)
- [Immunohistochemistry](#)
- [Immunofluorescence](#)
- [Immunoprecipitation](#)
- [Flow Cytometry](#)
- [Cell Culture](#)

#### **LY6G5B antibody - N-terminal region - Images**



WB Suggested Anti-LY6G5B Antibody Titration: 1.0  $\mu$ g/ml  
Positive Control: Fetal Lung

#### **LY6G5B antibody - N-terminal region - References**

- Albertella M.R., et al. *Genomics* 36:240-251(1996).  
Mallya M., et al. *Genomics* 80:113-123(2002).  
Ota T., et al. *Nat. Genet.* 36:40-45(2004).  
Shiina S., et al. Submitted (SEP-1999) to the EMBL/GenBank/DDBJ databases.  
Xie T., et al. *Genome Res.* 13:2621-2636(2003).