

AMMECR1 Antibody - C-terminal region
Rabbit Polyclonal Antibody
Catalog # AI14816**Specification**

AMMECR1 Antibody - C-terminal region - Product Information

Application	WB
Primary Accession	O9Y4X0
Other Accession	NM_001025580 , NP_001020751
Reactivity	Human, Mouse, Rat, Rabbit, Pig, Horse, Bovine, Guinea Pig, Dog
Predicted	Human, Mouse, Rat, Rabbit, Pig, Horse, Bovine, Guinea Pig, Dog
Host	Rabbit
Clonality	Polyclonal
Calculated MW	31kDa KDa

AMMECR1 Antibody - C-terminal region - Additional Information**Gene ID** 9949

Alias Symbol	AMMERC1
Other Names	
AMME syndrome candidate gene 1 protein, AMMECR1	

Format

Liquid. Purified antibody supplied in 1x PBS buffer with 0.09% (w/v) sodium azide and 2% sucrose.

Reconstitution & Storage

Add 50 ul of distilled water. Final anti-AMMECR1 antibody concentration is 1 mg/ml in PBS buffer with 2% sucrose. For longer periods of storage, store at 20°C. Avoid repeat freeze-thaw cycles.

Precautions

AMMECR1 Antibody - C-terminal region is for research use only and not for use in diagnostic or therapeutic procedures.

AMMECR1 Antibody - C-terminal region - Protein Information**Name** AMMECR1**Cellular Location**

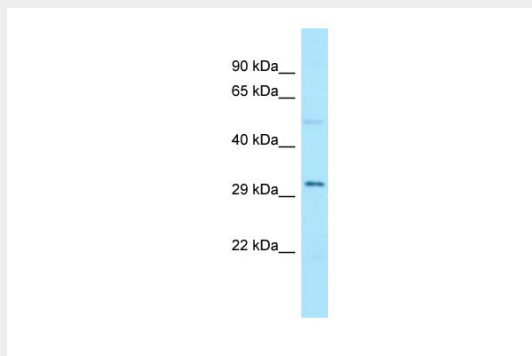
Nucleus.

AMMECR1 Antibody - C-terminal region - Protocols

Provided below are standard protocols that you may find useful for product applications.

- [Western Blot](#)
- [Blocking Peptides](#)
- [Dot Blot](#)
- [Immunohistochemistry](#)
- [Immunofluorescence](#)
- [Immunoprecipitation](#)
- [Flow Cytometry](#)
- [Cell Culture](#)

AMMECR1 Antibody - C-terminal region - Images



WB Suggested Anti-AMMECR1 Antibody Titration: 1.0 μ g/ml
Positive Control: Fetal Lung

AMMECR1 Antibody - C-terminal region - References

Vitelli F., et al. Genomics 55:335-340(1999).
Ota T., et al. Nat. Genet. 36:40-45(2004).
Ross M.T., et al. Nature 434:325-337(2005).