

GADD45GIP1 antibody - middle region
Rabbit Polyclonal Antibody
Catalog # AI14810

Specification

GADD45GIP1 antibody - middle region - Product Information

Application	WB
Primary Accession	Q8TAE8
Other Accession	NM_052850 , NP_443082
Reactivity	Human, Mouse, Rat, Rabbit, Pig, Horse, Yeast, Bovine, Guinea Pig, Dog
Predicted Host	Human, Rabbit, Guinea Pig, Dog
Clonality	Rabbit
Calculated MW	Polyclonal 24kDa KDa

GADD45GIP1 antibody - middle region - Additional Information

Gene ID 90480

Alias Symbol CKBBP2, CRIF1, MGC4667, MGC4758, PLINP-1, PRG6, Plinp1

Other Names

Growth arrest and DNA damage-inducible proteins-interacting protein 1, 39S ribosomal protein L59, mitochondrial, MRP-L59, CKII beta-associating protein, CR6-interacting factor 1, CRIF1, Papillomavirus L2-interacting nuclear protein 1, PLINP, PLINP-1, p53-responsive gene 6 protein, GADD45GIP1, MRPL59, PLINP1, PRG6

Format

Liquid. Purified antibody supplied in 1x PBS buffer with 0.09% (w/v) sodium azide and 2% sucrose.

Reconstitution & Storage

Add 50 ul of distilled water. Final anti-GADD45GIP1 antibody concentration is 1 mg/ml in PBS buffer with 2% sucrose. For longer periods of storage, store at 20°C. Avoid repeat freeze-thaw cycles.

Precautions

GADD45GIP1 antibody - middle region is for research use only and not for use in diagnostic or therapeutic procedures.

GADD45GIP1 antibody - middle region - Protein Information

Name GADD45GIP1

Synonyms MRPL59, PLINP1, PRG6

Function

Acts as a negative regulator of G1 to S cell cycle phase progression by inhibiting cyclin-dependent

kinases. Inhibitory effects are additive with GADD45 proteins but occurs also in the absence of GADD45 proteins. Acts as a repressor of the orphan nuclear receptor NR4A1 by inhibiting AB domain-mediated transcriptional activity. May be involved in the hormone-mediated regulation of NR4A1 transcriptional activity. May play a role in mitochondrial protein synthesis.

Cellular Location

Mitochondrion. Nucleus Note=Using N-terminally tagged constructs, has been found in the nucleus (PubMed:12482659). C-terminally tagged constructs are targeted exclusively to mitochondria (PubMed:22453275). This discrepancy may be explained by masking of a potential N-terminal mitochondrial targeting signal by the tag (PubMed:22453275).

Tissue Location

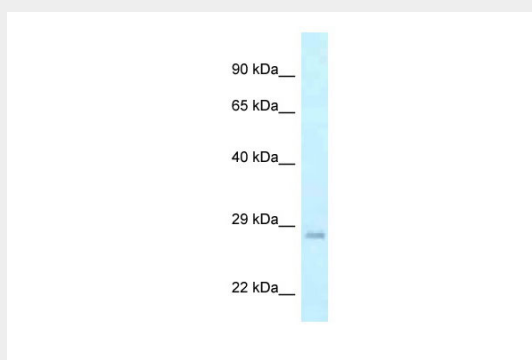
Widely expressed. Highly expressed in the thyroid gland, heart, lymph nodes, trachea and adrenal tissues. Expressed at lower level in liver skeletal muscle, kidney, pancreas, testis, ovary and stomach. Barely detectable in adrenal adenoma and papillary thyroid cancer.

GADD45GIP1 antibody - middle region - Protocols

Provided below are standard protocols that you may find useful for product applications.

- [Western Blot](#)
- [Blocking Peptides](#)
- [Dot Blot](#)
- [Immunohistochemistry](#)
- [Immunofluorescence](#)
- [Immunoprecipitation](#)
- [Flow Cytometry](#)
- [Cell Culture](#)

GADD45GIP1 antibody - middle region - Images



WB Suggested Anti-GADD45GIP1 Antibody Titration: 1.0 µg/ml

Positive Control: HeLa Whole Cell GADD45GIP1 is supported by BioGPS gene expression data to be expressed in HeLa

GADD45GIP1 antibody - middle region - References

- Goernemann J., et al. *Virology* 303:69-78(2002).
Chung H.K., et al. *J. Biol. Chem.* 278:28079-28088(2003).
Frigimelica E., et al. Submitted (JAN-2003) to the EMBL/GenBank/DDBJ databases.
Horikoshi N., et al. *Biochem. Biophys. Res. Commun.* 261:864-869(1999).
Park K.C., et al. *Mol. Endocrinol.* 19:12-24(2005).