

GPR150 antibody - C-terminal region
Rabbit Polyclonal Antibody
Catalog # AI14806

Specification

GPR150 antibody - C-terminal region - Product Information

Application	WB
Primary Accession	O8NGU9
Other Accession	NM_199243 , NP_954713
Reactivity	Human
Predicted	Human
Host	Rabbit
Clonality	Polyclonal
Calculated MW	48kDa KDa

GPR150 antibody - C-terminal region - Additional Information

Gene ID 285601

Alias Symbol **PGR11**
Other Names
Probable G-protein coupled receptor 150, GPR150

Format

Liquid. Purified antibody supplied in 1x PBS buffer with 0.09% (w/v) sodium azide and 2% sucrose.

Reconstitution & Storage

Add 50 ul of distilled water. Final anti-GPR150 antibody concentration is 1 mg/ml in PBS buffer with 2% sucrose. For longer periods of storage, store at 20°C. Avoid repeat freeze-thaw cycles.

Precautions

GPR150 antibody - C-terminal region is for research use only and not for use in diagnostic or therapeutic procedures.

GPR150 antibody - C-terminal region - Protein Information

Name GPR150

Function

Orphan receptor.

Cellular Location

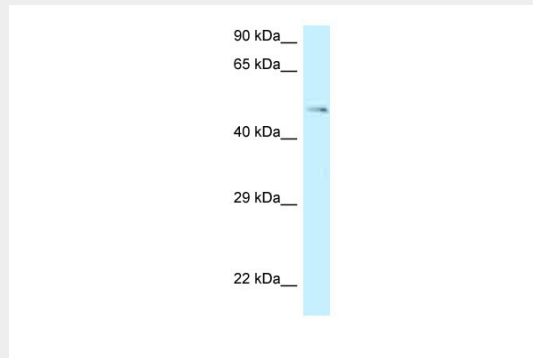
Cell membrane; Multi-pass membrane protein.

GPR150 antibody - C-terminal region - Protocols

Provided below are standard protocols that you may find useful for product applications.

- [Western Blot](#)
- [Blocking Peptides](#)
- [Dot Blot](#)
- [Immunohistochemistry](#)
- [Immunofluorescence](#)
- [Immunoprecipitation](#)
- [Flow Cytometry](#)
- [Cell Culture](#)

GPR150 antibody - C-terminal region - Images



WB Suggested Anti-GPR150 Antibody Titration: 1.0 μ g/ml
Positive Control: Jurkat Whole Cell

GPR150 antibody - C-terminal region - References

Suwa M., et al. Submitted (JUL-2001) to the EMBL/GenBank/DDBJ databases.