

CFHR1 antibody - C-terminal region
Rabbit Polyclonal Antibody
Catalog # AI14801**Specification**

CFHR1 antibody - C-terminal region - Product Information

Application	WB
Primary Accession	Q03591
Other Accession	NM_002113 , NP_002104
Reactivity	Human, Mouse, Rat, Rabbit, Pig, Sheep, Horse, Bovine
Predicted	Human, Mouse, Rat, Rabbit, Pig, Sheep, Horse, Bovine
Host	Rabbit
Clonality	Polyclonal
Calculated MW	36kDa KDa

CFHR1 antibody - C-terminal region - Additional Information**Gene ID** 3078**Alias Symbol** CFHL, CFHL1, CFHL1P, CFHR1P, FHR1, H36-1, H36-2, HFL1, HFL2, MGC104329**Other Names**

Complement factor H-related protein 1, FHR-1, H factor-like protein 1, H-factor-like 1, H36, CFHR1, CFHL, CFHL1, CFHL1P, CFHR1P, FHR1, HFL1, HFL2

Format

Liquid. Purified antibody supplied in 1x PBS buffer with 0.09% (w/v) sodium azide and 2% sucrose.

Reconstitution & Storage

Add 50 ul of distilled water. Final anti-CFHR1 antibody concentration is 1 mg/ml in PBS buffer with 2% sucrose. For longer periods of storage, store at 20°C. Avoid repeat freeze-thaw cycles.

Precautions

CFHR1 antibody - C-terminal region is for research use only and not for use in diagnostic or therapeutic procedures.

CFHR1 antibody - C-terminal region - Protein Information**Name** CFHR1**Synonyms** CFHL, CFHL1, CFHL1P, CFHR1P, FHR1, HFL1,**Function**

Involved in complement regulation. The dimerized forms have avidity for tissue-bound complement fragments and efficiently compete with the physiological complement inhibitor CFH. Can associate with lipoproteins and may play a role in lipid metabolism.

Cellular Location

Secreted.

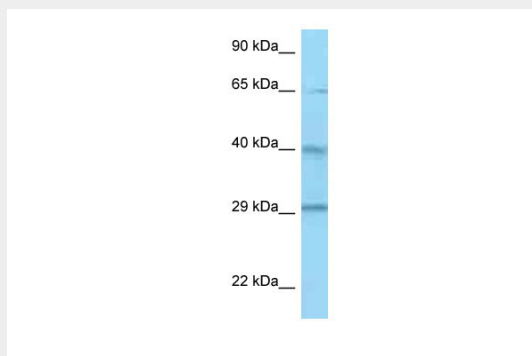
Tissue Location

Expressed by the liver and secreted in plasma.

CFHR1 antibody - C-terminal region - Protocols

Provided below are standard protocols that you may find useful for product applications.

- [Western Blot](#)
- [Blocking Peptides](#)
- [Dot Blot](#)
- [Immunohistochemistry](#)
- [Immunofluorescence](#)
- [Immunoprecipitation](#)
- [Flow Cytometry](#)
- [Cell Culture](#)

CFHR1 antibody - C-terminal region - Images

WB Suggested Anti-CFHR1 Antibody Titration: 1.0 μ g/ml

Positive Control: ACHN Whole Cell

CFHR1 antibody - C-terminal region - References

- Estaller C., et al. J. Immunol. 146:3190-3196(1991).
Male D.A., et al. Mol. Immunol. 37:41-52(2000).
Ota T., et al. Nat. Genet. 36:40-45(2004).
Gregory S.G., et al. Nature 441:315-321(2006).
Skerka C., et al. J. Biol. Chem. 266:12015-12020(1991).