

**CFHR1 antibody - N-terminal region**  
**Rabbit Polyclonal Antibody**  
**Catalog # AI14800****Specification**

---

**CFHR1 antibody - N-terminal region - Product Information**

Application	WB
Primary Accession	<a href="#">Q03591</a>
Other Accession	<a href="#">NM_002113</a> , <a href="#">NP_002104</a>
Reactivity	Human, Rat
Predicted	Human
Host	Rabbit
Clonality	Polyclonal
Calculated MW	36kDa KDa

**CFHR1 antibody - N-terminal region - Additional Information****Gene ID** 3078**Alias Symbol** CFHL, CFHL1, CFHL1P, CFHR1P, FHR1, H36-1, H36-2, HFL1, HFL2, MGC104329**Other Names**

Complement factor H-related protein 1, FHR-1, H factor-like protein 1, H-factor-like 1, H36, CFHR1, CFHL, CFHL1, CFHL1P, CFHR1P, FHR1, HFL1, HFL2

**Format**

Liquid. Purified antibody supplied in 1x PBS buffer with 0.09% (w/v) sodium azide and 2% sucrose.

**Reconstitution & Storage**

Add 50 ul of distilled water. Final anti-CFHR1 antibody concentration is 1 mg/ml in PBS buffer with 2% sucrose. For longer periods of storage, store at 20°C. Avoid repeat freeze-thaw cycles.

**Precautions**

CFHR1 antibody - N-terminal region is for research use only and not for use in diagnostic or therapeutic procedures.

**CFHR1 antibody - N-terminal region - Protein Information****Name** CFHR1**Synonyms** CFHL, CFHL1, CFHL1P, CFHR1P, FHR1, HFL1,**Function**

Involved in complement regulation. The dimerized forms have avidity for tissue-bound complement fragments and efficiently compete with the physiological complement inhibitor CFH. Can associate with lipoproteins and may play a role in lipid metabolism.

**Cellular Location**

Secreted.

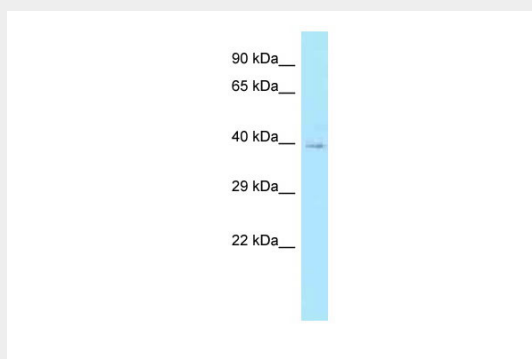
**Tissue Location**

Expressed by the liver and secreted in plasma.

**CFHR1 antibody - N-terminal region - Protocols**

Provided below are standard protocols that you may find useful for product applications.

- [Western Blot](#)
- [Blocking Peptides](#)
- [Dot Blot](#)
- [Immunohistochemistry](#)
- [Immunofluorescence](#)
- [Immunoprecipitation](#)
- [Flow Cytometry](#)
- [Cell Culture](#)

**CFHR1 antibody - N-terminal region - Images**

WB Suggested Anti-CFHR1 Antibody Titration: 1.0 µg/ml  
Positive Control: Hela Whole Cell

**CFHR1 antibody - N-terminal region - References**

- Estaller C., et al. *J. Immunol.* 146:3190-3196(1991).  
Male D.A., et al. *Mol. Immunol.* 37:41-52(2000).  
Ota T., et al. *Nat. Genet.* 36:40-45(2004).  
Gregory S.G., et al. *Nature* 441:315-321(2006).  
Skerka C., et al. *J. Biol. Chem.* 266:12015-12020(1991).