

**GOLPH3 antibody - middle region**  
**Rabbit Polyclonal Antibody**  
**Catalog # AI14787****Specification**

---

**GOLPH3 antibody - middle region - Product Information**

Application	<b>WB</b>
Primary Accession	<a href="#">O9H4A6</a>
Other Accession	<a href="#">NM_022130</a> , <a href="#">NP_071413</a>
Reactivity	<b>Human, Mouse, Rat, Rabbit, Horse, Bovine, Guinea Pig, Dog</b>
Predicted	<b>Human, Mouse, Rat, Rabbit, Pig, Chicken, Bovine, Dog</b>
Host	<b>Rabbit</b>
Clonality	<b>Polyclonal</b>
Calculated MW	<b>33kDa KDa</b>

**GOLPH3 antibody - middle region - Additional Information****Gene ID** 64083**Alias Symbol** **FLJ90675, GOPP1, GPP34, MIDAS****Other Names**

Golgi phosphoprotein 3, Coat protein GPP34, Mitochondrial DNA absence factor, MIDAS, GOLPH3, GPP34

**Format**

Liquid. Purified antibody supplied in 1x PBS buffer with 0.09% (w/v) sodium azide and 2% sucrose.

**Reconstitution & Storage**

Add 50 ul of distilled water. Final anti-GOLPH3 antibody concentration is 1 mg/ml in PBS buffer with 2% sucrose. For longer periods of storage, store at 20°C. Avoid repeat freeze-thaw cycles.

**Precautions**

GOLPH3 antibody - middle region is for research use only and not for use in diagnostic or therapeutic procedures.

**GOLPH3 antibody - middle region - Protein Information****Name** GOLPH3**Synonyms** GPP34**Function**

Phosphatidylinositol-4-phosphate-binding protein that links Golgi membranes to the cytoskeleton and may participate in the tensile force required for vesicle budding from the Golgi. Thereby, may play a role in Golgi membrane trafficking and could indirectly give its flattened shape to the Golgi apparatus. May also bind to the coatomer to regulate Golgi membrane trafficking. May play a role

in anterograde transport from the Golgi to the plasma membrane and regulate secretion. Has also been involved in the control of the localization of Golgi enzymes through interaction with their cytoplasmic part. May play an indirect role in cell migration. Has also been involved in the modulation of mTOR signaling. May also be involved in the regulation of mitochondrial lipids biosynthesis.

#### Cellular Location

Golgi apparatus, Golgi stack membrane; Peripheral membrane protein; Cytoplasmic side. Golgi apparatus, trans-Golgi network membrane; Peripheral membrane protein; Cytoplasmic side Mitochondrion intermembrane space. Cell membrane Endosome. Note=Phosphatidylinositol 4-phosphate-binding and oligomerization participate in the recruitment onto Golgi membranes.

#### Tissue Location

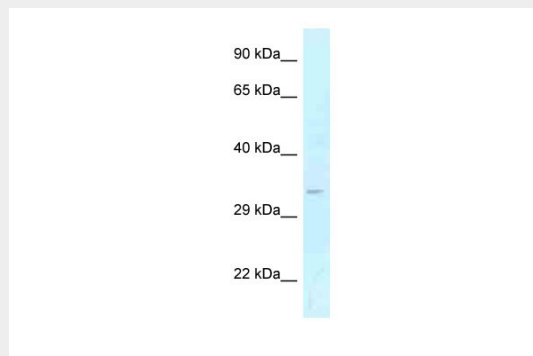
Detected in muscle fibers of patients with mitochondrial diseases; not detected in normal muscle fibers

### GOLPH3 antibody - middle region - Protocols

Provided below are standard protocols that you may find useful for product applications.

- [Western Blot](#)
- [Blocking Peptides](#)
- [Dot Blot](#)
- [Immunohistochemistry](#)
- [Immunofluorescence](#)
- [Immunoprecipitation](#)
- [Flow Cytometry](#)
- [Cell Culture](#)

### GOLPH3 antibody - middle region - Images



WB Suggested Anti-GOLPH3 Antibody Titration: 1.0 µg/ml  
Positive Control: Fetal Liver

### GOLPH3 antibody - middle region - References

- Bell A.W., et al. J. Biol. Chem. 276:5152-5165(2001).  
Ota T., et al. Nat. Genet. 36:40-45(2004).  
Gregory S.G., et al. Nature 441:315-321(2006).  
Bechtel S., et al. BMC Genomics 8:399-399(2007).  
Nakashima-Kamimura N., et al. J. Cell Sci. 118:5357-5367(2005).