

CLEC5A antibody - C-terminal region
Rabbit Polyclonal Antibody
Catalog # AI14777**Specification**

CLEC5A antibody - C-terminal region - Product Information

Application	WB
Primary Accession	O9NY25
Other Accession	NM_013252 , NP_037384
Reactivity	Human, Rat, Pig, Horse, Yeast, Bovine, Dog
Predicted	Human, Bovine
Host	Rabbit
Clonality	Polyclonal
Calculated MW	21kDa KDa

CLEC5A antibody - C-terminal region - Additional Information**Gene ID** 23601**Alias Symbol** **CLECSF5, MDL-1, MDL1, MGC138304****Other Names**

C-type lectin domain family 5 member A, C-type lectin superfamily member 5, Myeloid DAP12-associating lectin 1, MDL-1, CLEC5A, CLECSF5, MDL1

Format

Liquid. Purified antibody supplied in 1x PBS buffer with 0.09% (w/v) sodium azide and 2% sucrose.

Reconstitution & Storage

Add 50 ul of distilled water. Final anti-CLEC5A antibody concentration is 1 mg/ml in PBS buffer with 2% sucrose. For longer periods of storage, store at 20°C. Avoid repeat freeze-thaw cycles.

Precautions

CLEC5A antibody - C-terminal region is for research use only and not for use in diagnostic or therapeutic procedures.

CLEC5A antibody - C-terminal region - Protein Information**Name** CLEC5A**Synonyms** CLECSF5, MDL1**Function**Functions as a positive regulator of osteoclastogenesis (By similarity). Cell surface receptor that signals via TYROBP (PubMed: <http://www.uniprot.org/citations/10449773> target="_blank">10449773). Regulates inflammatory responses (By similarity).**Cellular Location**

Cell membrane; Single-pass type II membrane protein

Tissue Location

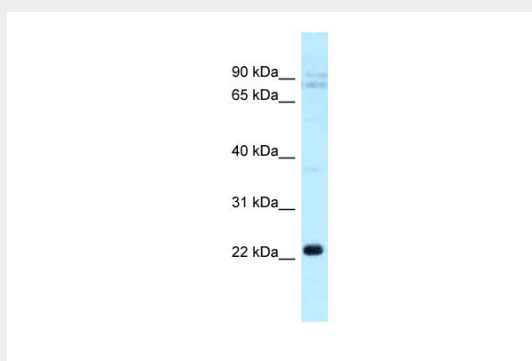
Highly expressed in bone marrow with lower levels in synovium, lung and bronchus (PubMed:20212065). Expressed in peripheral blood monocytes and in the monocyte/macrophage cell lines U- 937 and Mono-Mac-6, but not in cell lines of other origins (PubMed:10449773). Expression is down-regulated when monocytes differentiate into dendritic cells (PubMed:10449773)

CLEC5A antibody - C-terminal region - Protocols

Provided below are standard protocols that you may find useful for product applications.

- [Western Blot](#)
- [Blocking Peptides](#)
- [Dot Blot](#)
- [Immunohistochemistry](#)
- [Immunofluorescence](#)
- [Immunoprecipitation](#)
- [Flow Cytometry](#)
- [Cell Culture](#)

CLEC5A antibody - C-terminal region - Images



WB Suggested Anti-CLEC5A Antibody Titration: 1.0 µg/ml
Positive Control: THP-1 Whole Cell

CLEC5A antibody - C-terminal region - References

Bakker A.B.H., et al. Proc. Natl. Acad. Sci. U.S.A. 96:9792-9796(1999).
Mueller A., et al. Submitted (JAN-2000) to the EMBL/GenBank/DDBJ databases.
Hillier L.W., et al. Nature 424:157-164(2003).
Chen S.T., et al. Nature 453:672-676(2008).
Watson A.A., et al. J. Biol. Chem. 286:24208-24218(2011).