

ENTPD5 antibody - N-terminal region
Rabbit Polyclonal Antibody
Catalog # AI14762**Specification**

ENTPD5 antibody - N-terminal region - Product Information

Application	WB
Primary Accession	O75356
Other Accession	NM_001249 , NP_001240
Reactivity	Human, Mouse, Rat, Rabbit, Pig, Horse, Bovine, Guinea Pig, Dog
Predicted	Human, Mouse, Rat, Rabbit, Pig, Horse, Bovine, Guinea Pig, Dog
Host	Rabbit
Clonality	Polyclonal
Calculated MW	47kDa KDa

ENTPD5 antibody - N-terminal region - Additional Information**Gene ID** 957**Alias Symbol** CD39L4, MGC163357, MGC163359, NTPDase-5, PCPH**Other Names**

Ectonucleoside triphosphate diphosphohydrolase 5, NTPDase 5, 3.6.1.6, CD39 antigen-like 4, ER-UDPase, Guanosine-diphosphatase ENTPD5, GDPase ENTPD5, 3.6.1.42, Nucleoside diphosphatase, Uridine-diphosphatase ENTPD5, UDPase ENTPD5, ENTPD5, CD39L4, PCPH

Format

Liquid. Purified antibody supplied in 1x PBS buffer with 0.09% (w/v) sodium azide and 2% sucrose.

Reconstitution & Storage

Add 50 ul of distilled water. Final anti-ENTPD5 antibody concentration is 1 mg/ml in PBS buffer with 2% sucrose. For longer periods of storage, store at 20°C. Avoid repeat freeze-thaw cycles.

Precautions

ENTPD5 antibody - N-terminal region is for research use only and not for use in diagnostic or therapeutic procedures.

ENTPD5 antibody - N-terminal region - Protein Information**Name** ENTPD5 ([HGNC:3367](#))**Function**

Hydrolyzes nucleoside diphosphates with a preference for GDP, IDP and UDP compared to ADP and CDP (PubMed:10400613, PubMed:15698960). In the lumen of the endoplasmic reticulum, hydrolyzes UDP that

acts as an end-product feedback inhibitor of the UDP-Glc:glycoprotein glucosyltransferases. UMP can be transported back by an UDP-sugar antiporter to the cytosol where it is consumed to regenerate UDP- glucose. Therefore, it positively regulates protein reglucosylation by clearing UDP from the ER lumen and by promoting the regeneration of UDP-glucose. Protein reglucosylation is essential to proper glycoprotein folding and quality control in the ER (By similarity).

Cellular Location

Endoplasmic reticulum {ECO:0000250|UniProtKB:Q9WUZ9}. Secreted

Tissue Location

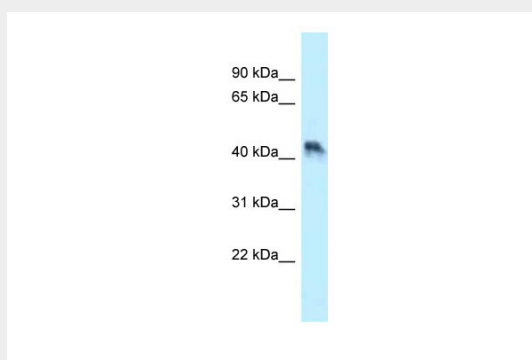
Expressed in adult liver, kidney, prostate, testis and colon. Much weaker expression in other tissues

ENTPD5 antibody - N-terminal region - Protocols

Provided below are standard protocols that you may find useful for product applications.

- [Western Blot](#)
- [Blocking Peptides](#)
- [Dot Blot](#)
- [Immunohistochemistry](#)
- [Immunofluorescence](#)
- [Immunoprecipitation](#)
- [Flow Cytometry](#)
- [Cell Culture](#)

ENTPD5 antibody - N-terminal region - Images



WB Suggested Anti-ENTPD5 Antibody Titration: 1.0 µg/ml

Positive Control: HT1080 Whole Cell

ENTPD5 antibody - N-terminal region - References

- Chadwick B.P., et al. Genomics 50:357-367(1998).
Recio J.A., et al. Mol. Carcinog. 27:229-236(2000).
Murphy-Piedmonte D.M., et al. Biochim. Biophys. Acta 1747:251-259(2005).
Heilig R., et al. Nature 421:601-607(2003).
Mural R.J., et al. Submitted (JUL-2005) to the EMBL/GenBank/DDBJ databases.