

**AMY2B antibody - C-terminal region**  
**Rabbit Polyclonal Antibody**  
**Catalog # AI14746**

**Specification**

---

**AMY2B antibody - C-terminal region - Product Information**

Application	WB
Primary Accession	<a href="#">P19961</a>
Other Accession	<a href="#">NM_020978</a> , <a href="#">NP_066188</a>
Reactivity	Human, Mouse, Rat, Rabbit, Pig, Dog
Predicted	Human, Mouse, Pig, Bovine
Host	Rabbit
Clonality	Polyclonal
Calculated MW	56kDa KDa

**AMY2B antibody - C-terminal region - Additional Information**

**Gene ID** 280

Alias Symbol **AMY2**

**Other Names**

Alpha-amylase 2B, 3.2.1.1, 1, 4-alpha-D-glucan glucohydrolase 2B, Carcinoid alpha-amylase, AMY2B

**Format**

Liquid. Purified antibody supplied in 1x PBS buffer with 0.09% (w/v) sodium azide and 2% sucrose.

**Reconstitution & Storage**

Add 50 ul of distilled water. Final anti-AMY2B antibody concentration is 1 mg/ml in PBS buffer with 2% sucrose. For longer periods of storage, store at 20°C. Avoid repeat freeze-thaw cycles.

**Precautions**

AMY2B antibody - C-terminal region is for research use only and not for use in diagnostic or therapeutic procedures.

**AMY2B antibody - C-terminal region - Protein Information**

**Name** AMY2B

**Cellular Location**

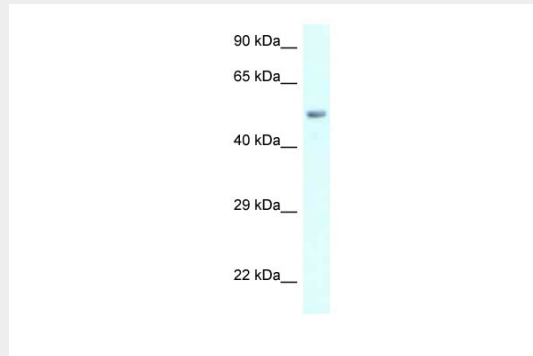
Secreted.

**AMY2B antibody - C-terminal region - Protocols**

Provided below are standard protocols that you may find useful for product applications.

- [Western Blot](#)
- [Blocking Peptides](#)
- [Dot Blot](#)
- [Immunohistochemistry](#)
- [Immunofluorescence](#)
- [Immunoprecipitation](#)
- [Flow Cytometry](#)
- [Cell Culture](#)

#### **AMY2B antibody - C-terminal region - Images**



WB Suggested Anti-AMY2B Antibody Titration: 1.0 µg/ml  
Positive Control: 721\_B Whole Cell

#### **AMY2B antibody - C-terminal region - References**

- Tomita N., et al. Gene 76:11-18(1989).  
Yokouchi H., et al. Gene 90:281-286(1990).  
Ota T., et al. Nat. Genet. 36:40-45(2004).  
Gregory S.G., et al. Nature 441:315-321(2006).  
Mural R.J., et al. Submitted (SEP-2005) to the EMBL/GenBank/DDBJ databases.