

HYAL3 antibody - C-terminal region
Rabbit Polyclonal Antibody
Catalog # AI14739**Specification**

HYAL3 antibody - C-terminal region - Product Information

Application	WB
Primary Accession	O43820
Other Accession	NM_003549 , NP_003540
Reactivity	Human, Mouse, Rat, Rabbit, Pig, Sheep, Horse, Bovine, Guinea Pig, Dog
Predicted	Human, Mouse, Rat, Rabbit, Pig, Horse, Guinea Pig
Host	Rabbit
Clonality	Polyclonal
Calculated MW	46kDa KDa

HYAL3 antibody - C-terminal region - Additional Information**Gene ID** 8372**Alias Symbol** LUCA-3, LUCA14, LUCA3, Minna14, HYAL-3**Other Names**

Hyaluronidase-3, Hyal-3, 3.2.1.35, Hyaluronoglucosaminidase-3, Lung carcinoma protein 3, LuCa-3, HYAL3, LUCA3

Format

Liquid. Purified antibody supplied in 1x PBS buffer with 0.09% (w/v) sodium azide and 2% sucrose.

Reconstitution & Storage

Add 50 ul of distilled water. Final anti-HYAL3 antibody concentration is 1 mg/ml in PBS buffer with 2% sucrose. For longer periods of storage, store at 20°C. Avoid repeat freeze-thaw cycles.

Precautions

HYAL3 antibody - C-terminal region is for research use only and not for use in diagnostic or therapeutic procedures.

HYAL3 antibody - C-terminal region - Protein Information**Name** HYAL3**Synonyms** LUCA3**Function**

Facilitates sperm penetration into the layer of cumulus cells surrounding the egg by digesting hyaluronic acid. Involved in induction of the acrosome reaction in the sperm. Involved in follicular atresia, the breakdown of immature ovarian follicles that are not selected to ovulate. Induces ovarian granulosa cell apoptosis, possibly via apoptotic signaling pathway involving CASP8 and

CASP3 activation, and poly(ADP-ribose) polymerase (PARP) cleavage. Has no hyaluronidase activity in embryonic fibroblasts in vitro. Has no hyaluronidase activity in granulosa cells in vitro.

Cellular Location

Secreted {ECO:0000250|UniProtKB:Q8VEI3}. Cell membrane {ECO:0000250|UniProtKB:Q8VEI3}. Cytoplasmic vesicle, secretory vesicle, acrosome {ECO:0000250|UniProtKB:Q8VEI3}. Endoplasmic reticulum {ECO:0000250|UniProtKB:Q8VEI3}. Early endosome {ECO:0000250|UniProtKB:Q8VEI3}. Note=Mostly present in low-density vesicles. Low levels in higher density vesicles of late endosomes and lysosomes. Localized in punctate cytoplasmic vesicles and in perinuclear structures, but does not colocalize with LAMP1. Localized on the plasma membrane over the acrosome and on the surface of the midpiece of the sperm tail. {ECO:0000250|UniProtKB:Q8VEI3}

Tissue Location

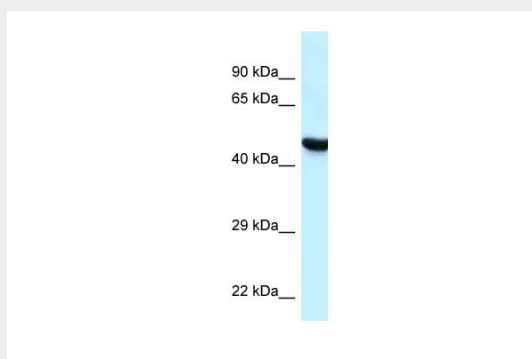
Expressed in sperm (PubMed:20586096). Highly expressed in epidermis of the skin, where it is expressed intracellularly in the deep horny layer (at protein level) (PubMed:21699545). Bone marrow, testis and kidney (PubMed:10493834)

HYAL3 antibody - C-terminal region - Protocols

Provided below are standard protocols that you may find useful for product applications.

- [Western Blot](#)
- [Blocking Peptides](#)
- [Dot Blot](#)
- [Immunohistochemistry](#)
- [Immunofluorescence](#)
- [Immunoprecipitation](#)
- [Flow Cytometry](#)
- [Cell Culture](#)

HYAL3 antibody - C-terminal region - Images



WB Suggested Anti-HYAL3 Antibody Titration: 1.0 µg/ml
Positive Control: MCF7 Whole Cell

HYAL3 antibody - C-terminal region - References

Csoka A.B., et al. Genomics 60:356-361(1999).
Lokeshwar V.B., et al. J. Biol. Chem. 277:33654-33663(2002).
Fong K., et al. Submitted (JAN-1998) to the EMBL/GenBank/DDBJ databases.
Muzny D.M., et al. Nature 440:1194-1198(2006).