

RPP21 antibody - middle region
Rabbit Polyclonal Antibody
Catalog # AI14730**Specification**

RPP21 antibody - middle region - Product Information

Application	WB
Primary Accession	O9BWT7
Other Accession	NM_014550 , NP_055365
Reactivity	Human, Mouse, Rat, Rabbit, Pig, Horse, Bovine, Guinea Pig, Dog
Predicted	Human, Mouse, Rat, Horse, Bovine, Guinea Pig, Dog
Host	Rabbit
Clonality	Polyclonal
Calculated MW	15kDa KDa

RPP21 antibody - middle region - Additional Information**Gene ID** 29775**Alias Symbol** **C6orf135, CAT60, FLJ22638****Other Names**

Caspase recruitment domain-containing protein 10, CARD-containing MAGUK protein 3, Carma 3, CARD10, CARMA3

Format

Liquid. Purified antibody supplied in 1x PBS buffer with 0.09% (w/v) sodium azide and 2% sucrose.

Reconstitution & Storage

Add 50 ul of distilled water. Final anti-RPP21 antibody concentration is 1 mg/ml in PBS buffer with 2% sucrose. For longer periods of storage, store at 20°C. Avoid repeat freeze-thaw cycles.

Precautions

RPP21 antibody - middle region is for research use only and not for use in diagnostic or therapeutic procedures.

RPP21 antibody - middle region - Protein Information**Name** CARD10**Synonyms** CARMA3**Function**

Scaffold protein that plays an important role in mediating the activation of NF-kappa-B via BCL10 or EGFR.

Cellular Location

Cytoplasm.

Tissue Location

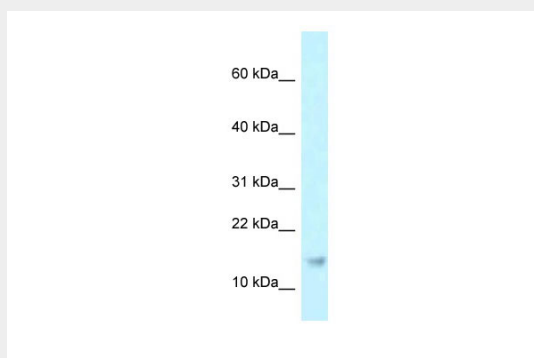
Detected in adult heart, kidney and liver; lower levels in intestine, placenta, muscle and lung. Also found in fetal lung, liver and kidney

RPP21 antibody - middle region - Protocols

Provided below are standard protocols that you may find useful for product applications.

- [Western Blot](#)
- [Blocking Peptides](#)
- [Dot Blot](#)
- [Immunohistochemistry](#)
- [Immunofluorescence](#)
- [Immunoprecipitation](#)
- [Flow Cytometry](#)
- [Cell Culture](#)

RPP21 antibody - middle region - Images



WB Suggested Anti-RPP21 Antibody Titration: 1.0 μ g/ml

Positive Control: U937 Whole Cell

RPP21 antibody - middle region - References

- Wang L., et al. J. Biol. Chem. 276:21405-21409(2001).
Gaide O., et al. FEBS Lett. 496:121-127(2001).
Gaide O., et al. FEBS Lett. 505:198-198(2001).
Ota T., et al. Nat. Genet. 36:40-45(2004).
Dunham I., et al. Nature 402:489-495(1999).