

**NDUFS8 antibody - C-terminal region**  
**Rabbit Polyclonal Antibody**  
**Catalog # AI14728****Specification**

---

**NDUFS8 antibody - C-terminal region - Product Information**

Application	WB
Primary Accession	<a href="#">O00217</a>
Other Accession	<a href="#">NM_002496</a> , <a href="#">NP_002487</a>
Reactivity	Human, Mouse, Rat, Goat, Horse, Yeast, Bovine, Guinea Pig, Dog
Predicted Host	Human, Mouse, Rat, Chicken
Clonality	Rabbit
Calculated MW	Polyclonal 23kDa KDa

**NDUFS8 antibody - C-terminal region - Additional Information****Gene ID** 4728**Alias Symbol** CI23KD, TYKY, CI-23k**Other Names**

NADH dehydrogenase [ubiquinone] iron-sulfur protein 8, mitochondrial, 1.6.5.3, 1.6.99.3, Complex I-23kD, CI-23kD, NADH-ubiquinone oxidoreductase 23 kDa subunit, TYKY subunit, NDUFS8

**Format**

Liquid. Purified antibody supplied in 1x PBS buffer with 0.09% (w/v) sodium azide and 2% sucrose.

**Reconstitution & Storage**

Add 50 ul of distilled water. Final anti-NDUFS8 antibody concentration is 1 mg/ml in PBS buffer with 2% sucrose. For longer periods of storage, store at 20°C. Avoid repeat freeze-thaw cycles.

**Precautions**

NDUFS8 antibody - C-terminal region is for research use only and not for use in diagnostic or therapeutic procedures.

**NDUFS8 antibody - C-terminal region - Protein Information****Name** NDUFS8**Function**Core subunit of the mitochondrial membrane respiratory chain NADH dehydrogenase (Complex I) which catalyzes electron transfer from NADH through the respiratory chain, using ubiquinone as an electron acceptor (PubMed: [22499348](http://www.uniprot.org/citations/22499348)). Essential for the catalytic activity and assembly of complex I (PubMed: [22499348](http://www.uniprot.org/citations/22499348)).**Cellular Location**

Mitochondrion inner membrane; Peripheral membrane protein {ECO:0000250|UniProtKB:P42028};  
Matrix side {ECO:0000250|UniProtKB:P42028}

#### Tissue Location

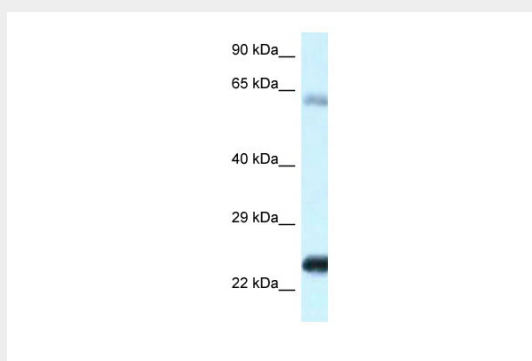
Expressed in all tissues with the highest level in heart and skeletal muscle and the lowest level in lung

#### NDUFS8 antibody - C-terminal region - Protocols

Provided below are standard protocols that you may find useful for product applications.

- [Western Blot](#)
- [Blocking Peptides](#)
- [Dot Blot](#)
- [Immunohistochemistry](#)
- [Immunofluorescence](#)
- [Immunoprecipitation](#)
- [Flow Cytometry](#)
- [Cell Culture](#)

#### NDUFS8 antibody - C-terminal region - Images



WB Suggested Anti-NDUFS8 Antibody Titration: 1.0 µg/ml  
Positive Control: Fetal Heart

#### NDUFS8 antibody - C-terminal region - References

Procaccio V., et al. *Biochim. Biophys. Acta* 1351:37-41(1997).  
de Sury R., et al. *Gene* 215:1-10(1998).  
Ota T., et al. *Nat. Genet.* 36:40-45(2004).  
Murray J., et al. *J. Biol. Chem.* 278:13619-13622(2003).  
Burkard T.R., et al. *BMC Syst. Biol.* 5:17-17(2011).