

**FGFRL1 Antibody - middle region**  
**Rabbit Polyclonal Antibody**  
**Catalog # AI14720****Specification**

---

**FGFRL1 Antibody - middle region - Product Information**

Application	<b>WB</b>
Primary Accession	<a href="#">O8N441</a>
Other Accession	<a href="#">XP_005272339</a>
Reactivity	<b>Human</b>
Host	<b>Rabbit</b>
Clonality	<b>Polyclonal</b>
Calculated MW	<b>55kDa KDa</b>

**FGFRL1 Antibody - middle region - Additional Information****Gene ID** 53834**Alias Symbol** **FGFRL1, FGFR5, FHFR, UNQ480/PRO943,****Other Names**

Fibroblast growth factor receptor-like 1, FGF receptor-like protein 1, FGF homologous factor receptor, FGFR-like protein, Fibroblast growth factor receptor 5, FGFR-5, FGFRL1, FGFR5, FHFR

**Format**

Liquid. Purified antibody supplied in 1x PBS buffer with 0.09% (w/v) sodium azide and 2% sucrose.

**Reconstitution & Storage**Add 50  $\mu$ l of distilled water. Final Anti-FGFRL1 antibody concentration is 1 mg/ml in PBS buffer with 2% sucrose. For longer periods of storage, store at -20°C. Avoid repeat freeze-thaw cycles.**Precautions**

FGFRL1 Antibody - middle region is for research use only and not for use in diagnostic or therapeutic procedures.

**FGFRL1 Antibody - middle region - Protein Information****Name** FGFRL1**Synonyms** FGFR5, FHFR**Function**

Has a negative effect on cell proliferation.

**Cellular Location**

Membrane; Single-pass type I membrane protein Note=Predominantly localized in the plasma membrane but also detected in the Golgi and in secretory vesicles

**Tissue Location**

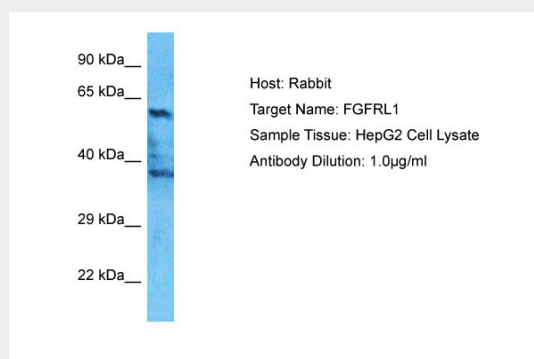
Expressed preferentially in cartilaginous tissues and pancreas. Highly expressed in the liver, kidney, heart, brain and skeletal muscle. Weakly expressed in the lung, small intestine and spleen.

### FGFRL1 Antibody - middle region - Protocols

Provided below are standard protocols that you may find useful for product applications.

- [Western Blot](#)
- [Blocking Peptides](#)
- [Dot Blot](#)
- [Immunohistochemistry](#)
- [Immunofluorescence](#)
- [Immunoprecipitation](#)
- [Flow Cytometry](#)
- [Cell Culture](#)

### FGFRL1 Antibody - middle region - Images



Host: Rabbit  
Target Name: FGFRL1  
Sample Tissue: HepG2 Whole cell lysate  
s  
Antibody Dilution: 1.0µg/ml

### FGFRL1 Antibody - middle region - References

Wiedemann M., et al. Genomics 69:275-279(2000).  
Kim I., et al. Biochim. Biophys. Acta 1518:152-156(2001).  
Aggarwal S., et al. Submitted (OCT-2000) to the EMBL/GenBank/DDBJ databases.  
Clark H.F., et al. Genome Res. 13:2265-2270(2003).  
Ota T., et al. Nat. Genet. 36:40-45(2004).