

CPVL Antibody - C-terminal region
Rabbit Polyclonal Antibody
Catalog # AI14716

Specification

CPVL Antibody - C-terminal region - Product Information

Application	WB
Primary Accession	O9H3G5
Other Accession	XP_005249843
Reactivity	Human
Predicted	Human, Rabbit, Horse, Bovine
Host	Rabbit
Clonality	Polyclonal
Calculated MW	52kDa KDa

CPVL Antibody - C-terminal region - Additional Information

Gene ID 54504

Alias Symbol CPVL, VLP, PSEC0124, UNQ197/PRO223,
Other Names

Probable serine carboxypeptidase CPVL, 3.4.16.-, Carboxypeptidase, vitellogenic-like, Vitellogenic carboxypeptidase-like protein, VCP-like protein, hVLP, CPVL, VLP

Format

Liquid. Purified antibody supplied in 1x PBS buffer with 0.09% (w/v) sodium azide and 2% sucrose.

Reconstitution & Storage

Add 50 μ l of distilled water. Final Anti-CPVL antibody concentration is 1 mg/ml in PBS buffer with 2% sucrose. For longer periods of storage, store at -20°C. Avoid repeat freeze-thaw cycles.

Precautions

CPVL Antibody - C-terminal region is for research use only and not for use in diagnostic or therapeutic procedures.

CPVL Antibody - C-terminal region - Protein Information

Name CPVL

Synonyms VLP

Function

May be involved in the digestion of phagocytosed particles in the lysosome, participation in an inflammatory protease cascade, and trimming of peptides for antigen presentation.

Tissue Location

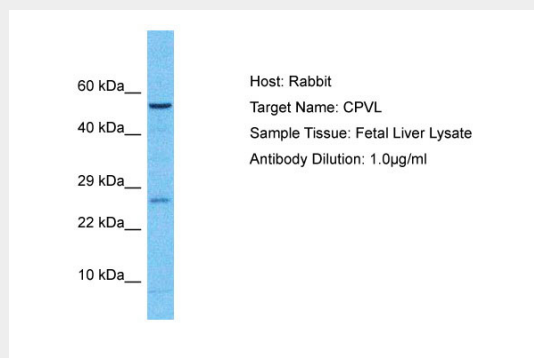
Expressed in macrophages but not in other leukocytes. Abundantly expressed in heart and kidney. Also expressed in spleen, leukocytes, and placenta

CPVL Antibody - C-terminal region - Protocols

Provided below are standard protocols that you may find useful for product applications.

- [Western Blot](#)
- [Blocking Peptides](#)
- [Dot Blot](#)
- [Immunohistochemistry](#)
- [Immunofluorescence](#)
- [Immunoprecipitation](#)
- [Flow Cytometry](#)
- [Cell Culture](#)

CPVL Antibody - C-terminal region - Images



Host: Rabbit
Target Name: CPVL
Sample Tissue: Fetal Liver lysates
Antibody Dilution: 1µg/ml

CPVL Antibody - C-terminal region - References

- Mahoney J.A., et al. *Genomics* 72:243-251(2001).
Cho J.-J., et al. Submitted (JUN-2000) to the EMBL/GenBank/DDBJ databases.
Clark H.F., et al. *Genome Res.* 13:2265-2270(2003).
Otsuki T., et al. *DNA Res.* 12:117-126(2005).
Scherer S.W., et al. *Science* 300:767-772(2003).