

SCARB2 Antibody - C-terminal region
Rabbit Polyclonal Antibody
Catalog # AI14704

Specification

SCARB2 Antibody - C-terminal region - Product Information

Application	WB
Primary Accession	Q14108
Other Accession	NM_005506 , NP_005497
Reactivity	Human, Mouse, Rat, Rabbit, Pig, Horse, Bovine, Guinea Pig, Dog
Predicted	Human, Mouse, Rat, Rabbit, Pig, Horse, Bovine, Guinea Pig, Dog
Host	Rabbit
Clonality	Polyclonal
Calculated MW	50kDa KDa

SCARB2 Antibody - C-terminal region - Additional Information

Gene ID 950

Alias Symbol AMRF, CD36L2, EPM4, HLGP85, LGP85, LIMP-2, LIMPII, SR-BII

Other Names

Lysosome membrane protein 2, 85 kDa lysosomal membrane sialoglycoprotein, LGP85, CD36 antigen-like 2, Lysosome membrane protein II, LIMP II, Scavenger receptor class B member 2, CD36, SCARB2, CD36L2, LIMP2, LIMPII

Format

Liquid. Purified antibody supplied in 1x PBS buffer with 0.09% (w/v) sodium azide and 2% sucrose.

Reconstitution & Storage

Add 50 ul of distilled water. Final anti-SCARB2 antibody concentration is 1 mg/ml in PBS buffer with 2% sucrose. For longer periods of storage, store at 20°C. Avoid repeat freeze-thaw cycles.

Precautions

SCARB2 Antibody - C-terminal region is for research use only and not for use in diagnostic or therapeutic procedures.

SCARB2 Antibody - C-terminal region - Protein Information

Name SCARB2

Synonyms CD36L2, LIMP2, LIMPII

Function

Acts as a lysosomal receptor for glucosylceramidase (GBA1) targeting.

Cellular Location

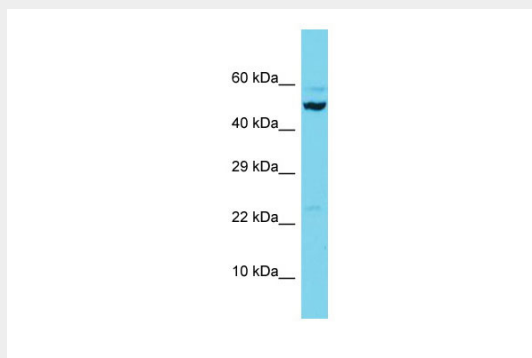
Lysosome membrane; Multi-pass membrane protein

SCARB2 Antibody - C-terminal region - Protocols

Provided below are standard protocols that you may find useful for product applications.

- [Western Blot](#)
- [Blocking Peptides](#)
- [Dot Blot](#)
- [Immunohistochemistry](#)
- [Immunofluorescence](#)
- [Immunoprecipitation](#)
- [Flow Cytometry](#)
- [Cell Culture](#)

SCARB2 Antibody - C-terminal region - Images



Host: Rabbit

Target Name: SCARB2

Sample Tissue: 721_B Whole cell lysate

s

Antibody Dilution: 1.0µg/ml

SCARB2 Antibody - C-terminal region - References

Fujita H., et al. *Biochem. Biophys. Res. Commun.* 184:604-611(1992).

Calvo D., et al. *Genomics* 25:100-106(1995).

Kalnine N., et al. Submitted (MAY-2003) to the EMBL/GenBank/DDBJ databases.

Ota T., et al. *Nat. Genet.* 36:40-45(2004).

Hillier L.W., et al. *Nature* 434:724-731(2005).