

RND1 antibody - C-terminal region
Rabbit Polyclonal Antibody
Catalog # AI14697**Specification**

RND1 antibody - C-terminal region - Product Information

Application	WB
Primary Accession	O92730
Other Accession	NM_014470 , NP_055285
Reactivity	Human, Mouse, Rat, Rabbit, Pig, Horse, Bovine, Guinea Pig, Dog
Predicted Host	Human, Mouse, Rat, Bovine, Dog
Clonality	Rabbit
Calculated MW	Polyclonal 26kDa KDa

RND1 antibody - C-terminal region - Additional Information**Gene ID** 27289**Alias Symbol** ARHS, FLJ42294, RHO6, RHOS**Other Names**

Rho-related GTP-binding protein Rho6, Rho family GTPase 1, Rnd1, RND1, RHO6

Format

Liquid. Purified antibody supplied in 1x PBS buffer with 0.09% (w/v) sodium azide and 2% sucrose.

Reconstitution & Storage

Add 50 ul of distilled water. Final anti-RND1 antibody concentration is 1 mg/ml in PBS buffer with 2% sucrose. For longer periods of storage, store at 20°C. Avoid repeat freeze-thaw cycles.

Precautions

RND1 antibody - C-terminal region is for research use only and not for use in diagnostic or therapeutic procedures.

RND1 antibody - C-terminal region - Protein Information**Name** RND1**Synonyms** RHO6**Function**

Lacks intrinsic GTPase activity. Has a low affinity for GDP, and constitutively binds GTP. Controls rearrangements of the actin cytoskeleton. Induces the Rac-dependent neuritic process formation in part by disruption of the cortical actin filaments. Causes the formation of many neuritic processes from the cell body with disruption of the cortical actin filaments.

Cellular Location

Cell membrane; Lipid-anchor; Cytoplasmic side. Cytoplasm, cytoskeleton

Tissue Location

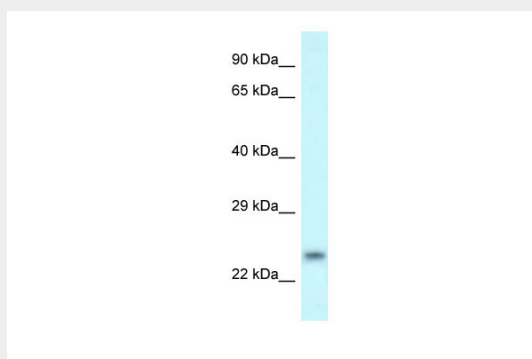
Mostly expressed in brain and liver.

RND1 antibody - C-terminal region - Protocols

Provided below are standard protocols that you may find useful for product applications.

- [Western Blot](#)
- [Blocking Peptides](#)
- [Dot Blot](#)
- [Immunohistochemistry](#)
- [Immunofluorescence](#)
- [Immunoprecipitation](#)
- [Flow Cytometry](#)
- [Cell Culture](#)

RND1 antibody - C-terminal region - Images



WB Suggested Anti-RND1 Antibody Titration: 1.0 µg/ml
Positive Control: THP-1 Whole Cell

RND1 antibody - C-terminal region - References

- Nobes C.D., et al. *J. Cell Biol.* 141:187-197(1998).
Tanaka S., et al. Submitted (MAR-2000) to the EMBL/GenBank/DDBJ databases.
Puhl H.L. III, et al. Submitted (APR-2002) to the EMBL/GenBank/DDBJ databases.
Ota T., et al. *Nat. Genet.* 36:40-45(2004).
Mural R.J., et al. Submitted (JUL-2005) to the EMBL/GenBank/DDBJ databases.