

IFIT1 Antibody - C-terminal region
Rabbit Polyclonal Antibody
Catalog # AI14695**Specification**

IFIT1 Antibody - C-terminal region - Product Information

Application	WB
Primary Accession	P09914
Other Accession	NM_001548 , NP_001539
Reactivity	Human
Predicted	Human
Host	Rabbit
Clonality	Polyclonal
Calculated MW	55kDa KDa

IFIT1 Antibody - C-terminal region - Additional Information**Gene ID** 3434**Alias Symbol** **C56, G10P1, GARG-16, IFI-56, IFI56, IFNAI1, ISG56, RNM561****Other Names**

Interferon-induced protein with tetratricopeptide repeats 1, IFIT-1, Interferon-induced 56 kDa protein, IFI-56K, P56, IFIT1, G10P1, IFI56, IFNAI1, ISG56

Format

Liquid. Purified antibody supplied in 1x PBS buffer with 0.09% (w/v) sodium azide and 2% sucrose.

Reconstitution & Storage

Add 50 ul of distilled water. Final anti-IFIT1 antibody concentration is 1 mg/ml in PBS buffer with 2% sucrose. For longer periods of storage, store at 20°C. Avoid repeat freeze-thaw cycles.

Precautions

IFIT1 Antibody - C-terminal region is for research use only and not for use in diagnostic or therapeutic procedures.

IFIT1 Antibody - C-terminal region - Protein Information**Name** IFIT1**Synonyms** G10P1, IFI56, IFNAI1, ISG56**Function**

Interferon-induced antiviral RNA-binding protein that specifically binds single-stranded RNA bearing a 5'-triphosphate group (PPP-RNA), thereby acting as a sensor of viral single-stranded RNAs and inhibiting expression of viral messenger RNAs. Single-stranded PPP- RNAs, which lack 2'-O-methylation of the 5' cap and bear a 5'- triphosphate group instead, are specific from viruses, providing a molecular signature to distinguish between self and non-self mRNAs by the host during

viral infection. Directly binds PPP-RNA in a non- sequence-specific manner. Viruses evolved several ways to evade this restriction system such as encoding their own 2'-O-methylase for their mRNAs or by stealing host cap containing the 2'-O-methylation (cap snatching mechanism). Exhibits antiviral activity against several viruses including human papilloma and hepatitis C viruses.

Cellular Location

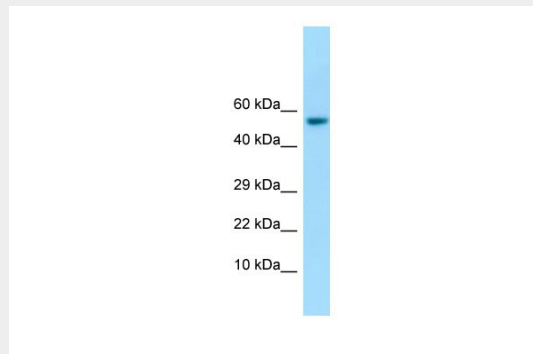
Cytoplasm

IFIT1 Antibody - C-terminal region - Protocols

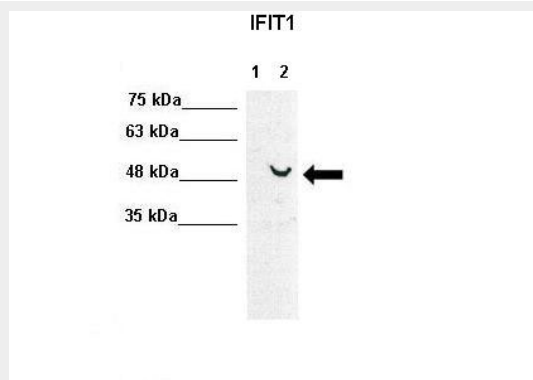
Provided below are standard protocols that you may find useful for product applications.

- [Western Blot](#)
- [Blocking Peptides](#)
- [Dot Blot](#)
- [Immunohistochemistry](#)
- [Immunofluorescence](#)
- [Immunoprecipitation](#)
- [Flow Cytometry](#)
- [Cell Culture](#)

IFIT1 Antibody - C-terminal region - Images



WB Suggested Anti-IFIT1 Antibody Titration: 1.0 µg/ml
Positive Control: Fetal Stomach



WB Suggested Anti-IFIT1 Antibody
Positive Control: Lane1: 30ug human Huh7, Lane2: 30ug human Huh7+IFNB stimulated
Primary Antibody Dilution : 1:1000
Secondary Antibody : Anti-rabbit-HRP

Secondary Antibody Dilution : 1:5000
Submitted by: Takeshi Saito, USC Keck School of Medicine

IFIT1 Antibody - C-terminal region - References

- Wathelet M., et al. Eur. J. Biochem. 155:11-17(1986).
Kalnine N., et al. Submitted (MAY-2003) to the EMBL/GenBank/DDBJ databases.
Ota T., et al. Nat. Genet. 36:40-45(2004).
Deloukas P., et al. Nature 429:375-381(2004).
Mural R.J., et al. Submitted (SEP-2005) to the EMBL/GenBank/DDBJ databases.