

PRKAR2A antibody - middle region
Rabbit Polyclonal Antibody
Catalog # AI14691

Specification

PRKAR2A antibody - middle region - Product Information

Application	WB
Primary Accession	P13861
Other Accession	NM_004157 , NP_004148
Reactivity	Human, Mouse, Rat, Rabbit, Pig, Horse, Bovine, Guinea Pig, Dog
Predicted Host	Human, Mouse, Rat, Pig, Guinea Pig, Dog
Clonality	Rabbit
Calculated MW	Polyclonal 44kDa KDa

PRKAR2A antibody - middle region - Additional Information

Gene ID 5576

Alias Symbol MGC3606, PKR2, PRKAR2

Other Names

cAMP-dependent protein kinase type II-alpha regulatory subunit, PRKAR2A, PKR2, PRKAR2

Format

Liquid. Purified antibody supplied in 1x PBS buffer with 0.09% (w/v) sodium azide and 2% sucrose.

Reconstitution & Storage

Add 50 ul of distilled water. Final anti-PRKAR2A antibody concentration is 1 mg/ml in PBS buffer with 2% sucrose. For longer periods of storage, store at 20°C. Avoid repeat freeze-thaw cycles.

Precautions

PRKAR2A antibody - middle region is for research use only and not for use in diagnostic or therapeutic procedures.

PRKAR2A antibody - middle region - Protein Information

Name PRKAR2A

Synonyms PKR2, PRKAR2

Function

Regulatory subunit of the cAMP-dependent protein kinases involved in cAMP signaling in cells. Type II regulatory chains mediate membrane association by binding to anchoring proteins, including the MAP2 kinase.

Cellular Location

Cytoplasm. Cell membrane. Note=Colocalizes with PJA2 in the cytoplasm and the cell membrane

Tissue Location

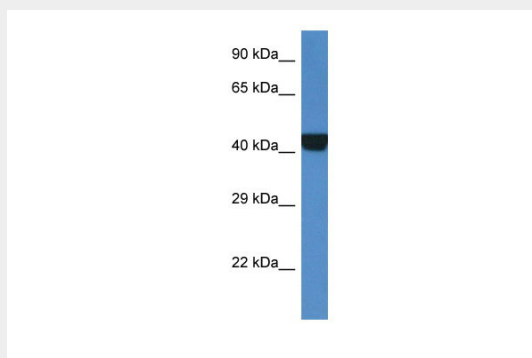
Four types of regulatory chains are found: I-alpha, I-beta, II-alpha, and II-beta. Their expression varies among tissues and is in some cases constitutive and in others inducible

PRKAR2A antibody - middle region - Protocols

Provided below are standard protocols that you may find useful for product applications.

- [Western Blot](#)
- [Blocking Peptides](#)
- [Dot Blot](#)
- [Immunohistochemistry](#)
- [Immunofluorescence](#)
- [Immunoprecipitation](#)
- [Flow Cytometry](#)
- [Cell Culture](#)

PRKAR2A antibody - middle region - Images



WB Suggested Anti-PRKAR2A Antibody Titration: 1.0 µg/ml
Positive Control: Fetal Kidney

PRKAR2A antibody - middle region - References

- Oyen O., et al. FEBS Lett. 246:57-64(1989).
Kalnine N., et al. Submitted (MAY-2003) to the EMBL/GenBank/DDBJ databases.
Muzny D.M., et al. Nature 440:1194-1198(2006).
Mural R.J., et al. Submitted (JUL-2005) to the EMBL/GenBank/DDBJ databases.
Foss K.B., et al. Biochim. Biophys. Acta 1350:98-108(1997).