

RAB2A antibody - C-terminal region
Rabbit Polyclonal Antibody
Catalog # AI14677**Specification**

RAB2A antibody - C-terminal region - Product Information

Application	WB
Primary Accession	P61019
Other Accession	NM_002865 , NP_002856
Reactivity	Human, Mouse, Rat, Rabbit, Pig, Goat, Horse, Bovine, Guinea Pig, Dog
Predicted	Human, Mouse, Rat, Rabbit, Pig, Chicken, Bovine, Guinea Pig, Dog
Host	Rabbit
Clonality	Polyclonal
Calculated MW	23kDa KDa

RAB2A antibody - C-terminal region - Additional Information**Gene ID** 5862**Alias Symbol** RAB2, LHX
Other Names
Ras-related protein Rab-2A, RAB2A, RAB2**Format**

Liquid. Purified antibody supplied in 1x PBS buffer with 0.09% (w/v) sodium azide and 2% sucrose.

Reconstitution & Storage

Add 50 ul of distilled water. Final anti-RAB2A antibody concentration is 1 mg/ml in PBS buffer with 2% sucrose. For longer periods of storage, store at 20°C. Avoid repeat freeze-thaw cycles.

Precautions

RAB2A antibody - C-terminal region is for research use only and not for use in diagnostic or therapeutic procedures.

RAB2A antibody - C-terminal region - Protein Information**Name** RAB2A ([HGNC:9763](#))**Synonyms** RAB2**Function**

The small GTPases Rab are key regulators of intracellular membrane trafficking, from the formation of transport vesicles to their fusion with membranes. Rabs cycle between active GTP-bound and inactive GDP-bound states. In their active state, drive transport of vesicular carriers from donor organelles to acceptor organelles to regulate the membrane traffic that maintains organelle identity and morphology. Required for protein transport from the endoplasmic

reticulum to the Golgi complex. Regulates the compacted morphology of the Golgi (Probable). Together with RAB2B redundantly required for efficient autophagic flux (PubMed:28483915).

Cellular Location

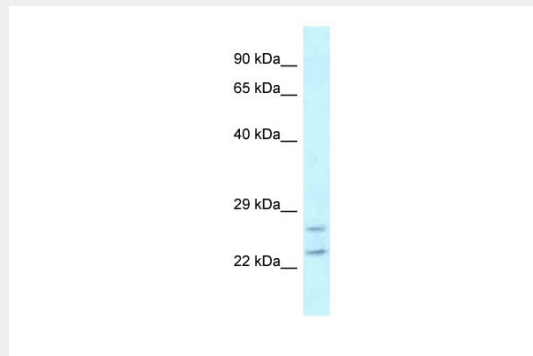
Endoplasmic reticulum-Golgi intermediate compartment membrane; Lipid-anchor; Cytoplasmic side Melanosome. Endoplasmic reticulum membrane; Lipid-anchor; Cytoplasmic side. Golgi apparatus membrane; Lipid-anchor; Cytoplasmic side. Cytoplasmic vesicle, secretory vesicle, acrosome {ECO:0000250|UniProtKB:P53994}. Cytoplasmic vesicle, autophagosome membrane {ECO:0000250|UniProtKB:P53994}; Lipid-anchor; Cytoplasmic side Note=Localized in the Golgi apparatus in the round spermatids and in the acrosome in the elongating spermatid (By similarity). Identified by mass spectrometry in melanosome fractions from stage I to stage IV (PubMed:17081065). {ECO:0000250|UniProtKB:P53994, ECO:0000269|PubMed:17081065}

RAB2A antibody - C-terminal region - Protocols

Provided below are standard protocols that you may find useful for product applications.

- [Western Blot](#)
- [Blocking Peptides](#)
- [Dot Blot](#)
- [Immunohistochemistry](#)
- [Immunofluorescence](#)
- [Immunoprecipitation](#)
- [Flow Cytometry](#)
- [Cell Culture](#)

RAB2A antibody - C-terminal region - Images



RAB2A antibody - C-terminal region (AI14677) validated by WB using MDA-MB435S cell lysate at 1µg/ml. RAB2A is strongly supported by BioGPS gene expression data to be expressed in Human MDA-MB435 cells

RAB2A antibody - C-terminal region - References

- Tachibana K., et al. Nucleic Acids Res. 16:10368-10368(1988).
Zahraoui A., et al. J. Biol. Chem. 264:12394-12401(1989).
Puhl H.L. III, et al. Submitted (APR-2002) to the EMBL/GenBank/DDBJ databases.
Kalnine N., et al. Submitted (MAY-2003) to the EMBL/GenBank/DDBJ databases.
Ota T., et al. Nat. Genet. 36:40-45(2004).