

ABI2 Antibody - N-terminal region
Rabbit Polyclonal Antibody
Catalog # AI14672**Specification**

ABI2 Antibody - N-terminal region - Product Information

Application	WB
Primary Accession	O9NYB9
Other Accession	NM_005759 , NP_005750
Reactivity	Human, Mouse, Rat, Rabbit, Horse, Yeast, Bovine, Guinea Pig, Dog
Predicted	Human, Mouse, Rat, Rabbit, Pig, Horse, Yeast, Bovine, Guinea Pig, Dog
Host	Rabbit
Clonality	Polyclonal
Calculated MW	52kDa KDa

ABI2 Antibody - N-terminal region - Additional Information**Gene ID** 10152**Alias Symbol** ABI-2, ABI2B, AIP-1, AbIBP3, SSH3BP2, argBPIA, argBPIB**Other Names**

Abl interactor 2, Abelson interactor 2, Abi-2, Abl-binding protein 3, AbIBP3, Arg-binding protein 1, ArgBP1, ABI2, ARGBPIA

Format

Liquid. Purified antibody supplied in 1x PBS buffer with 0.09% (w/v) sodium azide and 2% sucrose.

Reconstitution & Storage

Add 50 ul of distilled water. Final anti-ABI2 antibody concentration is 1 mg/ml in PBS buffer with 2% sucrose. For longer periods of storage, store at 20°C. Avoid repeat freeze-thaw cycles.

Precautions

ABI2 Antibody - N-terminal region is for research use only and not for use in diagnostic or therapeutic procedures.

ABI2 Antibody - N-terminal region - Protein Information**Name** ABI2 {ECO:0000303|PubMed:28397838, ECO:0000312|HGNC:HGNC:24011}**Function**

Regulator of actin cytoskeleton dynamics underlying cell motility and adhesion. Functions as a component of the WAVE complex, which activates actin nucleating machinery Arp2/3 to drive lamellipodia formation (PubMed:21107423). Acts as a regulator and substrate of nonreceptor tyrosine kinases ABL1 and ABL2 involved in processes linked to cell growth and differentiation. Positively

regulates ABL1-mediated phosphorylation of ENAH, which is required for proper polymerization of nucleated actin filaments at the leading edge (PubMed:10498863, PubMed:7590236, PubMed:8649853). Contributes to the regulation of actin assembly at the tips of neuron projections. In particular, controls dendritic spine morphogenesis and may promote dendritic spine specification toward large mushroom-type spines known as repositories of memory in the brain (By similarity). In hippocampal neurons, may mediate actin-dependent BDNF-NTRK2 early endocytic trafficking that triggers dendrite outgrowth (By similarity). Participates in ocular lens morphogenesis, likely by regulating lamellipodia-driven adherens junction formation at the epithelial cell-secondary lens fiber interface (By similarity). Also required for nascent adherens junction assembly in epithelial cells (PubMed:15572692).

Cellular Location

Cytoplasm. Nucleus

Tissue Location

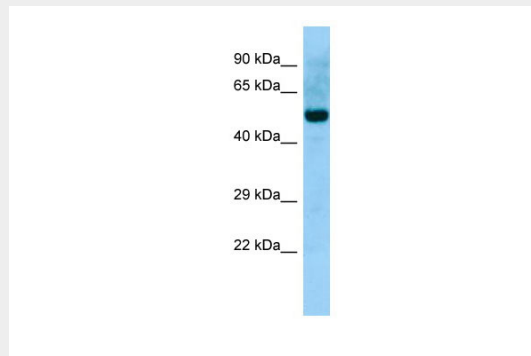
Widely expressed. Abundant in testes, ovary, thymus, and colon, with lower but detectable levels in prostate, peripheral blood leukocytes, and spleen.

ABI2 Antibody - N-terminal region - Protocols

Provided below are standard protocols that you may find useful for product applications.

- [Western Blot](#)
- [Blocking Peptides](#)
- [Dot Blot](#)
- [Immunohistochemistry](#)
- [Immunofluorescence](#)
- [Immunoprecipitation](#)
- [Flow Cytometry](#)
- [Cell Culture](#)

ABI2 Antibody - N-terminal region - Images



WB Suggested Anti-ABI2 Antibody Titration: 1.0 µg/ml
Positive Control: Fetal Stomach

ABI2 Antibody - N-terminal region - References

Dai Z., et al. Genes Dev. 9:2569-2582(1995).
Ren R., et al. Submitted (JUL-1995) to the EMBL/GenBank/DDBJ databases.

Wang B.,et al.Oncogene 12:1921-1929(1996).

Kalnine N.,et al.Submitted (AUG-2003) to the EMBL/GenBank/DDBJ databases.

Ota T.,et al.Nat. Genet. 36:40-45(2004).