

STOM antibody - C-terminal region
Rabbit Polyclonal Antibody
Catalog # AI14668

Specification

STOM antibody - C-terminal region - Product Information

Application	IF, WB
Primary Accession	P27105
Other Accession	NM_004099 , NP_004090
Reactivity	Human, Mouse, Rat, Rabbit, Horse, Bovine, Guinea Pig, Dog
Predicted	Human, Mouse, Rat, Rabbit, Pig, Chicken, Horse, Bovine, Guinea Pig, Dog
Host	Rabbit
Clonality	Polyclonal
Calculated MW	32kDa KDa

STOM antibody - C-terminal region - Additional Information

Gene ID 2040

Alias Symbol **BND7, EPB7, EPB72**

Other Names

Erythrocyte band 7 integral membrane protein, Protein 7.2b, Stomatin, STOM, BND7, EPB72

Format

Liquid. Purified antibody supplied in 1x PBS buffer with 0.09% (w/v) sodium azide and 2% sucrose.

Reconstitution & Storage

Add 50 ul of distilled water. Final anti-STOM antibody concentration is 1 mg/ml in PBS buffer with 2% sucrose. For longer periods of storage, store at 20°C. Avoid repeat freeze-thaw cycles.

Precautions

STOM antibody - C-terminal region is for research use only and not for use in diagnostic or therapeutic procedures.

STOM antibody - C-terminal region - Protein Information

Name STOM ([HGNC:3383](#))

Function

Regulates ion channel activity and transmembrane ion transport. Regulates ASIC2 and ASIC3 channel activity.

Cellular Location

Cell membrane; Peripheral membrane protein; Cytoplasmic side. Cytoplasm, cytoskeleton. Cell membrane; Lipid-anchor; Cytoplasmic side. Membrane raft. Melanosome. Cytoplasmic vesicle {ECO:0000250|UniProtKB:P54116}. Note=Localizes to juxtannuclear structure probably derived

from the Golgi apparatus (PubMed:9243190) Colocalizes with cortical actin microfilaments at small plasma membrane protrusions (PubMed:9243190). Associates with alpha-granular lipid rafts (PubMed:12130500). Translocates from the alpha-granular lipid rafts to the cell membrane on thrombin activation and selectively enriched in released microvesicles (PubMed:12130500). Identified by mass spectrometry in melanosome fractions from stage I to stage IV (PubMed:12643545).

Tissue Location

Detected in erythrocytes (at protein level). Widely expressed.

STOM antibody - C-terminal region - Protocols

Provided below are standard protocols that you may find useful for product applications.

- [Western Blot](#)
- [Blocking Peptides](#)
- [Dot Blot](#)
- [Immunohistochemistry](#)
- [Immunofluorescence](#)
- [Immunoprecipitation](#)
- [Flow Cytometry](#)
- [Cell Culture](#)

STOM antibody - C-terminal region - Images



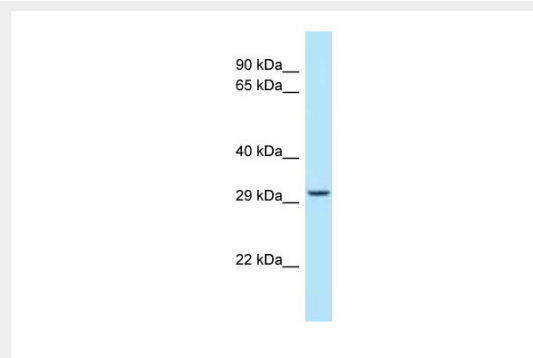
Sample Type : HeLa cells

Primary Antibody Dilution : 1:150

Secondary Antibody : Goat anti-rabbit-Alexa Fluor 488 Secondary Antibody Dilution : 1:800

Color/Signal Descriptions : Green: STOM Blue: DAPI

Gene Name : STOM Submitted by : COCOLA Cinzia, Stem Cell Biology and Cancer Research Unit



WB Suggested Anti-STOM Antibody Titration: 1.0 µg/ml

Positive Control: Hela Whole Cell STOM is strongly supported by BioGPS gene expression data to be expressed in Human HeLa cells

STOM antibody - C-terminal region - References

Hiebl-Dirschmied C.M., et al. *Biochim. Biophys. Acta* 1090:123-124(1991).

Stewart G.W., et al. *Blood* 79:1593-1601(1992).

Unfried I., et al. *Genomics* 30:521-528(1995).

Gallagher P.G., et al. *J. Biol. Chem.* 270:26358-26363(1995).

Halleck A., et al. Submitted (JUN-2004) to the EMBL/GenBank/DDBJ databases.