

GALR2 antibody - C-terminal region
Rabbit Polyclonal Antibody
Catalog # AI14666**Specification**

GALR2 antibody - C-terminal region - Product Information

Application	WB
Primary Accession	O43603
Other Accession	NM_003857 , NP_003848
Reactivity	Human, Horse
Predicted	Human, Horse
Host	Rabbit
Clonality	Polyclonal
Calculated MW	43kDa KDa

GALR2 antibody - C-terminal region - Additional Information**Gene ID** 8811**Alias Symbol** GALNR2, MGC125983, MGC125984**Other Names**

Galanin receptor type 2, GAL2-R, GALR-2, GALR2, GALNR2

Format

Liquid. Purified antibody supplied in 1x PBS buffer with 0.09% (w/v) sodium azide and 2% sucrose.

Reconstitution & Storage

Add 50 ul of distilled water. Final anti-GALR2 antibody concentration is 1 mg/ml in PBS buffer with 2% sucrose. For longer periods of storage, store at 20°C. Avoid repeat freeze-thaw cycles.

Precautions

GALR2 antibody - C-terminal region is for research use only and not for use in diagnostic or therapeutic procedures.

GALR2 antibody - C-terminal region - Protein Information**Name** GALR2**Synonyms** GALNR2**Function**

Receptor for the hormone galanin and GALP. Receptor for the hormone spexin-1 (PubMed:24517231). The activity of this receptor is mediated by G proteins that activate the phospholipase C/protein kinase C pathway (via G(q)) and that inhibit adenylyl cyclase (via G(i)).

Cellular Location

Cell membrane; Multi-pass membrane protein.

Tissue Location

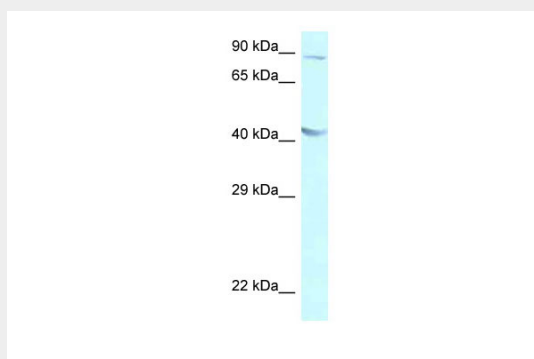
Expressed abundantly within the central nervous system in both hypothalamus and hippocampus. In peripheral tissues, the strongest expression was observed in heart, kidney, liver, and small intestine

GALR2 antibody - C-terminal region - Protocols

Provided below are standard protocols that you may find useful for product applications.

- [Western Blot](#)
- [Blocking Peptides](#)
- [Dot Blot](#)
- [Immunohistochemistry](#)
- [Immunofluorescence](#)
- [Immunoprecipitation](#)
- [Flow Cytometry](#)
- [Cell Culture](#)

GALR2 antibody - C-terminal region - Images



WB Suggested Anti-GALR2 Antibody Titration: 1.0 µg/ml

Positive Control: A549 Whole Cell GALR2 is supported by BioGPS gene expression data to be expressed in A549

GALR2 antibody - C-terminal region - References

- Bloomquist B.T., et al. *Biochem. Biophys. Res. Commun.* 243:474-479(1998).
Borowsky B., et al. *Peptides* 19:1771-1781(1998).
Fathi Z., et al. *Brain Res. Mol. Brain Res.* 58:156-169(1998).
Kolakowski L.F. Jr., et al. *J. Neurochem.* 71:2239-2251(1998).
Martin A.L., et al. Submitted (APR-2007) to the EMBL/GenBank/DDBJ databases.