

IL16 Antibody - C-terminal region
Rabbit Polyclonal Antibody
Catalog # AI14649

Specification

IL16 Antibody - C-terminal region - Product Information

Application	WB
Primary Accession	O14005
Other Accession	NM_004513 , NP_004504
Reactivity	Human, Pig, Goat, Horse
Predicted	Human, Pig, Goat, Horse
Host	Rabbit
Clonality	Polyclonal
Calculated MW	67kDa KDa

IL16 Antibody - C-terminal region - Additional Information

Gene ID 3603

Alias Symbol [FLJ16806](#), [FLJ42735](#), [FLJ44234](#), [LCF](#), [NIL16](#), [PRIL16](#), [prIL-16](#)

Other Names

Pro-interleukin-16, Interleukin-16, IL-16, Lymphocyte chemoattractant factor, LCF, IL16

Format

Liquid. Purified antibody supplied in 1x PBS buffer with 0.09% (w/v) sodium azide and 2% sucrose.

Reconstitution & Storage

Add 50 ul of distilled water. Final anti-IL16 antibody concentration is 1 mg/ml in PBS buffer with 2% sucrose. For longer periods of storage, store at 20°C. Avoid repeat freeze-thaw cycles.

Precautions

IL16 Antibody - C-terminal region is for research use only and not for use in diagnostic or therapeutic procedures.

IL16 Antibody - C-terminal region - Protein Information

Name IL16

Function

Interleukin-16 stimulates a migratory response in CD4+ lymphocytes, monocytes, and eosinophils. Primes CD4+ T-cells for IL-2 and IL-15 responsiveness. Also induces T-lymphocyte expression of interleukin 2 receptor. Ligand for CD4. Isoform 3 is involved in cell cycle progression in T-cells. Appears to be involved in transcriptional regulation of SKP2 and is probably part of a transcriptional repression complex on the core promoter of the SKP2 gene. May act as a scaffold for GABPB1 (the DNA-binding subunit of the GABP transcription factor complex) and HDAC3 thus maintaining transcriptional repression and blocking cell cycle progression in resting T-cells.

Cellular Location

[Interleukin-16]: Secreted. [Isoform 3]: Cytoplasm. Nucleus.

Tissue Location

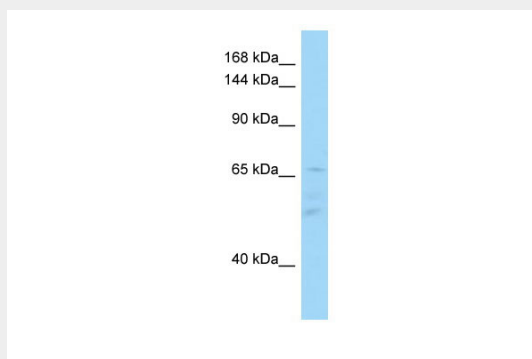
[Isoform 3]: Expressed in hemopoietic tissues, such as resting T-cells, but undetectable during active T-cell proliferation

IL16 Antibody - C-terminal region - Protocols

Provided below are standard protocols that you may find useful for product applications.

- [Western Blot](#)
- [Blocking Peptides](#)
- [Dot Blot](#)
- [Immunohistochemistry](#)
- [Immunofluorescence](#)
- [Immunoprecipitation](#)
- [Flow Cytometry](#)
- [Cell Culture](#)

IL16 Antibody - C-terminal region - Images



WB Suggested Anti-IL16 Antibody Titration: 1.0 µg/ml
Positive Control: Fetal Spleen

IL16 Antibody - C-terminal region - References

- Bannert N., et al. J. Biol. Chem. 278:42190-42199(2003).
Wang P., et al. BMC Genomics 10:518-518(2009).
Kornfeld H., et al. Submitted (JAN-1999) to the EMBL/GenBank/DDBJ databases.
Ota T., et al. Nat. Genet. 36:40-45(2004).
Zody M.C., et al. Nature 440:671-675(2006).