

STX2 antibody - N-terminal region
Rabbit Polyclonal Antibody
Catalog # AI14630

Specification

STX2 antibody - N-terminal region - Product Information

Application	WB
Primary Accession	P32856
Other Accession	NM_194356 , NP_919337
Reactivity	Human, Mouse, Rat, Rabbit, Pig, Horse, Bovine, Guinea Pig, Dog
Predicted	Human, Mouse, Rat, Rabbit, Pig, Horse, Bovine, Guinea Pig, Dog
Host	Rabbit
Clonality	Polyclonal
Calculated MW	32kDa KDa

STX2 antibody - N-terminal region - Additional Information

Gene ID 2054

Alias Symbol EPIM, EPM, MGC51014, STX2A, STX2B, STX2C

Other Names Syntaxin-2, Epimorphin, STX2, EPIM, STX2A, STX2B, STX2C

Format

Liquid. Purified antibody supplied in 1x PBS buffer with 0.09% (w/v) sodium azide and 2% sucrose.

Reconstitution & Storage

Add 50 ul of distilled water. Final anti-STX2 antibody concentration is 1 mg/ml in PBS buffer with 2% sucrose. For longer periods of storage, store at 20°C. Avoid repeat freeze-thaw cycles.

Precautions

STX2 antibody - N-terminal region is for research use only and not for use in diagnostic or therapeutic procedures.

STX2 antibody - N-terminal region - Protein Information

Name STX2

Synonyms EPIM, STX2A, STX2B, STX2C

Function

Essential for epithelial morphogenesis. May mediate Ca(2+)- regulation of exocytosis acrosomal reaction in sperm.

Cellular Location

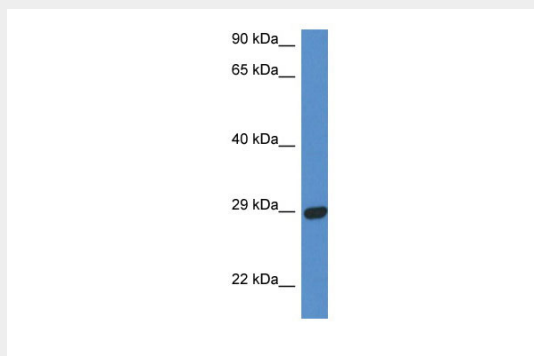
Membrane; Single-pass type IV membrane protein.

STX2 antibody - N-terminal region - Protocols

Provided below are standard protocols that you may find useful for product applications.

- [Western Blot](#)
- [Blocking Peptides](#)
- [Dot Blot](#)
- [Immunohistochemistry](#)
- [Immunofluorescence](#)
- [Immunoprecipitation](#)
- [Flow Cytometry](#)
- [Cell Culture](#)

STX2 antibody - N-terminal region - Images



WB Suggested Anti-STX2 Antibody Titration: 1.0 μ g/ml
Positive Control: Fetal Heart

STX2 antibody - N-terminal region - References

Hirai Y., et al. *Biochem. Biophys. Res. Commun.* 191:1332-1337(1993).
Scherer S.E., et al. *Nature* 440:346-351(2006).