

**EDN3 antibody - C-terminal region**  
**Rabbit Polyclonal Antibody**  
**Catalog # AI14625**

**Specification**

---

**EDN3 antibody - C-terminal region - Product Information**

Application	WB
Primary Accession	<a href="#">P14138</a>
Other Accession	<a href="#">NM_207032</a> , <a href="#">NP_996915</a>
Reactivity	Human, Pig
Predicted	Human, Pig
Host	Rabbit
Clonality	Polyclonal
Calculated MW	24kDa KDa

**EDN3 antibody - C-terminal region - Additional Information**

**Gene ID 1908**

Alias Symbol	ET3, MGC15067, MGC61498, ET-3, WS4B, HSCR4, PPET3
--------------	---

**Other Names**

Endothelin-3, ET-3, Preproendothelin-3, PPET3, EDN3

**Format**

Liquid. Purified antibody supplied in 1x PBS buffer with 0.09% (w/v) sodium azide and 2% sucrose.

**Reconstitution & Storage**

Add 50 ul of distilled water. Final anti-EDN3 antibody concentration is 1 mg/ml in PBS buffer with 2% sucrose. For longer periods of storage, store at 20°C. Avoid repeat freeze-thaw cycles.

**Precautions**

EDN3 antibody - C-terminal region is for research use only and not for use in diagnostic or therapeutic procedures.

**EDN3 antibody - C-terminal region - Protein Information**

**Name** EDN3

**Function**

Endothelins are endothelium-derived vasoconstrictor peptides.

**Cellular Location**

Secreted.

**Tissue Location**

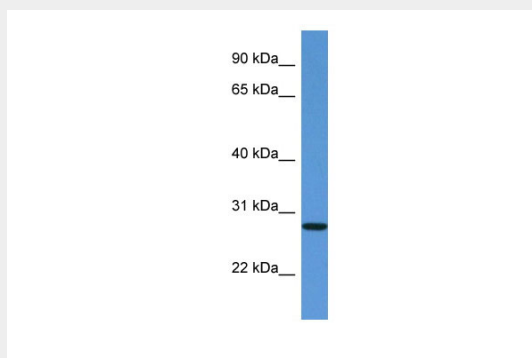
Expressed in trophoblasts and placental stem villi vessels, but not in cultured placental smooth muscle cells

## EDN3 antibody - C-terminal region - Protocols

Provided below are standard protocols that you may find useful for product applications.

- [Western Blot](#)
- [Blocking Peptides](#)
- [Dot Blot](#)
- [Immunohistochemistry](#)
- [Immunofluorescence](#)
- [Immunoprecipitation](#)
- [Flow Cytometry](#)
- [Cell Culture](#)

## EDN3 antibody - C-terminal region - Images



WB Suggested Anti-EDN3 Antibody Titration: 1.0  $\mu$ g/ml  
Positive Control: Fetal Kidney

## EDN3 antibody - C-terminal region - References

- Bloch K.D., et al. J. Biol. Chem. 264:18156-18161(1989).  
Onda H., et al. FEBS Lett. 261:327-330(1990).  
Kalnina N., et al. Submitted (MAY-2003) to the EMBL/GenBank/DDBJ databases.  
Deloukas P., et al. Nature 414:865-871(2001).  
Mural R.J., et al. Submitted (SEP-2005) to the EMBL/GenBank/DDBJ databases.