

STX8 antibody - C-terminal region
Rabbit Polyclonal Antibody
Catalog # AI14614

Specification

STX8 antibody - C-terminal region - Product Information

Application	WB
Primary Accession	O9UNK0
Other Accession	NM_004853 , NP_004844
Reactivity	Human, Mouse, Rat, Horse, Bovine, Guinea Pig, Dog
Predicted	Human, Mouse, Rat, Chicken, Horse, Bovine, Dog
Host	Rabbit
Clonality	Polyclonal
Calculated MW	27kDa KDa

STX8 antibody - C-terminal region - Additional Information

Gene ID 9482

Alias Symbol	CARB
Other Names	
Syntaxin-8, STX8	

Format

Liquid. Purified antibody supplied in 1x PBS buffer with 0.09% (w/v) sodium azide and 2% sucrose.

Reconstitution & Storage

Add 50 ul of distilled water. Final anti-STX8 antibody concentration is 1 mg/ml in PBS buffer with 2% sucrose. For longer periods of storage, store at 20°C. Avoid repeat freeze-thaw cycles.

Precautions

STX8 antibody - C-terminal region is for research use only and not for use in diagnostic or therapeutic procedures.

STX8 antibody - C-terminal region - Protein Information

Name STX8

Function

Vesicle trafficking protein that functions in the early secretory pathway, possibly by mediating retrograde transport from cis- Golgi membranes to the ER.

Cellular Location

Membrane; Single-pass type IV membrane protein. Note=Preferentially associated with the early endosome. To a lesser extent, also present in late endosome, the plasma membrane and coated pits (By similarity).

Tissue Location

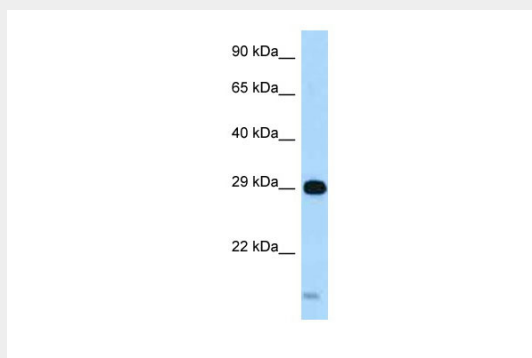
Highly expressed in heart. Also found in brain, kidney, liver, lung, placenta, skeletal muscle, spleen and pancreas

STX8 antibody - C-terminal region - Protocols

Provided below are standard protocols that you may find useful for product applications.

- [Western Blot](#)
- [Blocking Peptides](#)
- [Dot Blot](#)
- [Immunohistochemistry](#)
- [Immunofluorescence](#)
- [Immunoprecipitation](#)
- [Flow Cytometry](#)
- [Cell Culture](#)

STX8 antibody - C-terminal region - Images



WB Suggested Anti-STX8 Antibody Titration: 1.0 µg/ml

Positive Control: Fetal Heart

STX8 antibody - C-terminal region - References

- Steggmaier M., et al. J. Biol. Chem. 273:34171-34179(1998).
Thoreau V., et al. Biochem. Biophys. Res. Commun. 257:577-583(1999).
Subramaniam V.N., et al. Submitted (DEC-1997) to the EMBL/GenBank/DDBJ databases.
Kalnina N., et al. Submitted (MAY-2003) to the EMBL/GenBank/DDBJ databases.
Mural R.J., et al. Submitted (SEP-2005) to the EMBL/GenBank/DDBJ databases.