

VCL antibody - C-terminal region
Rabbit Polyclonal Antibody
Catalog # AI14611**Specification**

VCL antibody - C-terminal region - Product Information

Application	WB
Primary Accession	P18206
Other Accession	NM_003373 , NP_003364
Reactivity	Human, Mouse, Rat, Rabbit, Horse, Bovine, Guinea Pig, Dog
Predicted	Human, Rabbit, Chicken, Horse, Bovine, Guinea Pig, Dog
Host	Rabbit
Clonality	Polyclonal
Calculated MW	117kDa KDa

VCL antibody - C-terminal region - Additional Information**Gene ID** 7414**Alias Symbol** CMD1W, CMH15, MVCL
Other Names
Vinculin, Metavinculin, MV, VCL**Format**

Liquid. Purified antibody supplied in 1x PBS buffer with 0.09% (w/v) sodium azide and 2% sucrose.

Reconstitution & Storage

Add 50 ul of distilled water. Final anti-VCL antibody concentration is 1 mg/ml in PBS buffer with 2% sucrose. For longer periods of storage, store at 20°C. Avoid repeat freeze-thaw cycles.

Precautions

VCL antibody - C-terminal region is for research use only and not for use in diagnostic or therapeutic procedures.

VCL antibody - C-terminal region - Protein Information**Name** VCL**Function**

Actin filament (F-actin)-binding protein involved in cell- matrix adhesion and cell-cell adhesion. Regulates cell-surface E- cadherin expression and potentiates mechanosensing by the E-cadherin complex. May also play important roles in cell morphology and locomotion.

Cellular Location

Cell membrane {ECO:0000250|UniProtKB:P12003}; Peripheral membrane protein {ECO:0000250|UniProtKB:P12003}; Cytoplasmic side {ECO:0000250|UniProtKB:P12003}. Cell

junction, adherens junction {ECO:0000250|UniProtKB:P12003}. Cell junction, focal adhesion {ECO:0000250|UniProtKB:P12003}. Cytoplasm, cytoskeleton {ECO:0000250|UniProtKB:P85972}. Cell membrane, sarcolemma {ECO:0000250|UniProtKB:Q64727}; Peripheral membrane protein {ECO:0000250|UniProtKB:Q64727}; Cytoplasmic side {ECO:0000250|UniProtKB:Q64727}. Cell projection, podosome {ECO:0000250|UniProtKB:Q64727}. Note=Recruitment to cell-cell junctions occurs in a myosin II-dependent manner. Interaction with CTNNB1 is necessary for its localization to the cell-cell junctions {ECO:0000250|UniProtKB:P12003}

Tissue Location

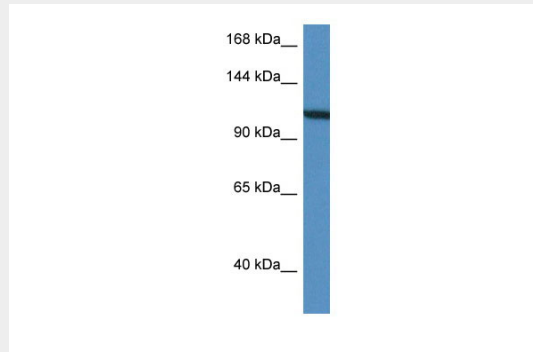
Metavinculin is muscle-specific.

VCL antibody - C-terminal region - Protocols

Provided below are standard protocols that you may find useful for product applications.

- [Western Blot](#)
- [Blocking Peptides](#)
- [Dot Blot](#)
- [Immunohistochemistry](#)
- [Immunofluorescence](#)
- [Immunoprecipitation](#)
- [Flow Cytometry](#)
- [Cell Culture](#)

VCL antibody - C-terminal region - Images



WB Suggested Anti-VCL Antibody Titration: 1.0 µg/ml

Positive Control: HepG2 Whole Cell

VCL antibody - C-terminal region - References

- Weller P.A., et al. Proc. Natl. Acad. Sci. U.S.A. 87:5667-5671(1990).
Bechtel S., et al. BMC Genomics 8:399-399(2007).
Deloukas P., et al. Nature 429:375-381(2004).
Moiseyeva E.P., et al. J. Biol. Chem. 268:4318-4325(1993).
Lubec G., et al. Submitted (DEC-2008) to UniProtKB.