

**VINC Antibody - C-terminal region**  
**Rabbit Polyclonal Antibody**  
**Catalog # AI14610****Specification**

---

**VINC Antibody - C-terminal region - Product Information**

Application	<b>WB</b>
Primary Accession	<a href="#">P18206</a>
Reactivity	<b>Human</b>
Host	<b>Rabbit</b>
Clonality	<b>Polyclonal</b>
Calculated MW	<b>124kDa KDa</b>

**VINC Antibody - C-terminal region - Additional Information****Gene ID** 7414**Alias Symbol** **VCL,**  
**Other Names**  
Vinculin, Metavinculin, MV, VCL**Format**

Liquid. Purified antibody supplied in 1x PBS buffer with 0.09% (w/v) sodium azide and 2% sucrose.

**Reconstitution & Storage**Add 50  $\mu$ l of distilled water. Final Anti-VINC antibody concentration is 1 mg/ml in PBS buffer with 2% sucrose. For longer periods of storage, store at -20°C. Avoid repeat freeze-thaw cycles.**Precautions**

VINC Antibody - C-terminal region is for research use only and not for use in diagnostic or therapeutic procedures.

**VINC Antibody - C-terminal region - Protein Information****Name** VCL**Function**

Actin filament (F-actin)-binding protein involved in cell- matrix adhesion and cell-cell adhesion. Regulates cell-surface E- cadherin expression and potentiates mechanosensing by the E-cadherin complex. May also play important roles in cell morphology and locomotion.

**Cellular Location**

Cell membrane {ECO:0000250|UniProtKB:P12003}; Peripheral membrane protein {ECO:0000250|UniProtKB:P12003}; Cytoplasmic side {ECO:0000250|UniProtKB:P12003}. Cell junction, adherens junction {ECO:0000250|UniProtKB:P12003}. Cell junction, focal adhesion {ECO:0000250|UniProtKB:P12003}. Cytoplasm, cytoskeleton {ECO:0000250|UniProtKB:P85972}. Cell membrane, sarcolemma {ECO:0000250|UniProtKB:Q64727}; Peripheral membrane protein {ECO:0000250|UniProtKB:Q64727}; Cytoplasmic side {ECO:0000250|UniProtKB:Q64727}. Cell

projection, podosome {ECO:0000250|UniProtKB:Q64727}. Note=Recruitment to cell-cell junctions occurs in a myosin II-dependent manner. Interaction with CTNNB1 is necessary for its localization to the cell-cell junctions {ECO:0000250|UniProtKB:P12003}

#### Tissue Location

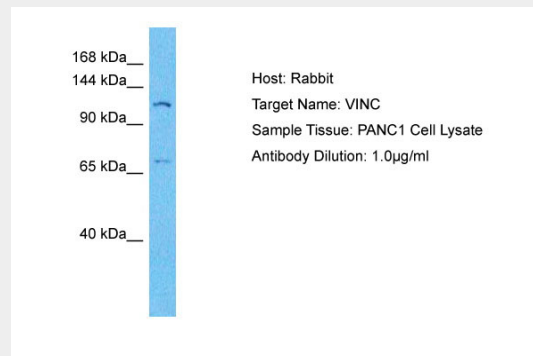
Metavinculin is muscle-specific.

#### VINC Antibody - C-terminal region - Protocols

Provided below are standard protocols that you may find useful for product applications.

- [Western Blot](#)
- [Blocking Peptides](#)
- [Dot Blot](#)
- [Immunohistochemistry](#)
- [Immunofluorescence](#)
- [Immunoprecipitation](#)
- [Flow Cytometry](#)
- [Cell Culture](#)

#### VINC Antibody - C-terminal region - Images



Host: Rabbit  
Target Name: VINC  
Sample Tissue: PANC1 Whole Cell lysates  
Antibody Dilution: 1.0µg/ml

#### VINC Antibody - C-terminal region - References

Weller P.A., et al. Proc. Natl. Acad. Sci. U.S.A. 87:5667-5671(1990).  
Bechtel S., et al. BMC Genomics 8:399-399(2007).  
Deloukas P., et al. Nature 429:375-381(2004).  
Moiseyeva E.P., et al. J. Biol. Chem. 268:4318-4325(1993).  
Lubec G., et al. Submitted (DEC-2008) to UniProtKB.