

ANPEP antibody - N-terminal region
Rabbit Polyclonal Antibody
Catalog # AI14607

Specification

ANPEP antibody - N-terminal region - Product Information

Application	WB
Primary Accession	P15144
Other Accession	NM_001150 , NP_001141
Reactivity	Human, Rat, Rabbit, Horse, Guinea Pig, Dog
Predicted Host	Human, Horse, Guinea Pig
Clonality	Rabbit
Calculated MW	Polyclonal 106kDa KDa

ANPEP antibody - N-terminal region - Additional Information

Gene ID 290

Alias Symbol APN, CD13, GP150, LAP1, P150, PEPN

Other Names

Aminopeptidase N, AP-N, hAPN, 3.4.11.2, Alanyl aminopeptidase, Aminopeptidase M, AP-M, Microsomal aminopeptidase, Myeloid plasma membrane glycoprotein CD13, gp150, CD13, ANPEP, APN, CD13, PEPN

Format

Liquid. Purified antibody supplied in 1x PBS buffer with 0.09% (w/v) sodium azide and 2% sucrose.

Reconstitution & Storage

Add 50 ul of distilled water. Final anti-ANPEP antibody concentration is 1 mg/ml in PBS buffer with 2% sucrose. For longer periods of storage, store at 20°C. Avoid repeat freeze-thaw cycles.

Precautions

ANPEP antibody - N-terminal region is for research use only and not for use in diagnostic or therapeutic procedures.

ANPEP antibody - N-terminal region - Protein Information

Name ANPEP

Synonyms APN, CD13, PEPN

Function

Broad specificity aminopeptidase which plays a role in the final digestion of peptides generated from hydrolysis of proteins by gastric and pancreatic proteases. Also involved in the processing of various peptides including peptide hormones, such as angiotensin III and IV, neuropeptides, and chemokines. May also be involved the cleavage of peptides bound to major histocompatibility

complex class II molecules of antigen presenting cells. May have a role in angiogenesis and promote cholesterol crystallization. May have a role in amino acid transport by acting as binding partner of amino acid transporter SLC6A19 and regulating its activity (By similarity).

Cellular Location

Cell membrane; Single-pass type II membrane protein. Note=Also found as a soluble form

Tissue Location

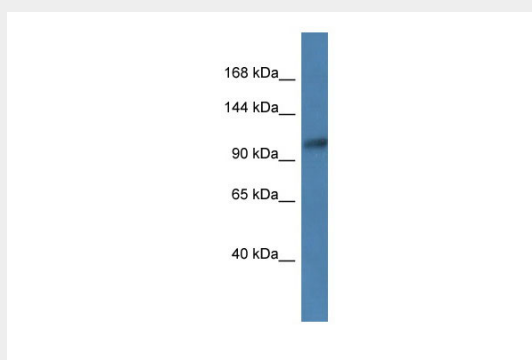
Expressed in epithelial cells of the kidney, intestine, and respiratory tract; granulocytes, monocytes, fibroblasts, endothelial cells, cerebral pericytes at the blood-brain barrier, synaptic membranes of cells in the CNS. Also expressed in endometrial stromal cells, but not in the endometrial glandular cells. Found in the vasculature of tissues that undergo angiogenesis and in malignant gliomas and lymph node metastases from multiple tumor types but not in blood vessels of normal tissues. A soluble form has been found in plasma. It is found to be elevated in plasma and effusions of cancer patients.

ANPEP antibody - N-terminal region - Protocols

Provided below are standard protocols that you may find useful for product applications.

- [Western Blot](#)
- [Blocking Peptides](#)
- [Dot Blot](#)
- [Immunohistochemistry](#)
- [Immunofluorescence](#)
- [Immunoprecipitation](#)
- [Flow Cytometry](#)
- [Cell Culture](#)

ANPEP antibody - N-terminal region - Images



WB Suggested Anti-ANPEP Antibody Titration: 1.0 µg/ml
Positive Control: Jurkat Whole Cell

ANPEP antibody - N-terminal region - References

- Olsen J., et al. FEBS Lett. 238:307-314(1988).
Look A.T., et al. J. Clin. Invest. 83:1299-1307(1989).
Zody M.C., et al. Nature 440:671-675(2006).
Shapiro L.H., et al. J. Biol. Chem. 266:11999-12007(1991).
Eiz-Vesper B., et al. Submitted (JAN-2002) to the EMBL/GenBank/DDBJ databases.