

**CD44 antibody - C-terminal region**  
**Rabbit Polyclonal Antibody**  
**Catalog # AI14602**

**Specification**

---

**CD44 antibody - C-terminal region - Product Information**

Application	WB
Primary Accession	<a href="#">P16070</a>
Other Accession	<a href="#">NM_001001391</a> , <a href="#">NP_001001391</a>
Reactivity	Human, Mouse, Rat, Rabbit, Pig, Horse, Bovine, Guinea Pig, Dog
Predicted	Human, Mouse, Rat, Pig, Horse, Bovine, Guinea Pig, Dog
Host	Rabbit
Clonality	Polyclonal
Calculated MW	40kDa KDa

**CD44 antibody - C-terminal region - Additional Information**

**Gene ID** 960

**Alias Symbol** CDW44, CSPG8, ECMR-III, HCELL, IN, LHR, MC56, MDU2, MDU3, MGC10468, MIC4, MUTCH-I, Pgp1, HUTCH-I

**Other Names**

CD44 antigen, CDw44, Epican, Extracellular matrix receptor III, ECMR-III, GP90 lymphocyte homing/adhesion receptor, HUTCH-I, Heparan sulfate proteoglycan, Hermes antigen, Hyaluronate receptor, Phagocytic glycoprotein 1, PGP-1, Phagocytic glycoprotein I, PGP-I, CD44, CD44, LHR, MDU2, MDU3, MIC4

**Format**

Liquid. Purified antibody supplied in 1x PBS buffer with 0.09% (w/v) sodium azide and 2% sucrose.

**Reconstitution & Storage**

Add 50 ul of distilled water. Final anti-CD44 antibody concentration is 1 mg/ml in PBS buffer with 2% sucrose. For longer periods of storage, store at 20°C. Avoid repeat freeze-thaw cycles.

**Precautions**

CD44 antibody - C-terminal region is for research use only and not for use in diagnostic or therapeutic procedures.

**CD44 antibody - C-terminal region - Protein Information**

**Name** CD44

**Synonyms** LHR, MDU2, MDU3, MIC4

**Function**

Cell-surface receptor that plays a role in cell-cell interactions, cell adhesion and migration, helping them to sense and respond to changes in the tissue microenvironment (PubMed:<a href="http://www.uniprot.org/citations/16541107" target="\_blank">16541107</a>, PubMed:<a href="http://www.uniprot.org/citations/19703720" target="\_blank">19703720</a>, PubMed:<a href="http://www.uniprot.org/citations/22726066" target="\_blank">22726066</a>). Participates thereby in a wide variety of cellular functions including the activation, recirculation and homing of T-lymphocytes, hematopoiesis, inflammation and response to bacterial infection (PubMed:<a href="http://www.uniprot.org/citations/7528188" target="\_blank">7528188</a>). Engages, through its ectodomain, extracellular matrix components such as hyaluronan/HA, collagen, growth factors, cytokines or proteases and serves as a platform for signal transduction by assembling, via its cytoplasmic domain, protein complexes containing receptor kinases and membrane proteases (PubMed:<a href="http://www.uniprot.org/citations/18757307" target="\_blank">18757307</a>, PubMed:<a href="http://www.uniprot.org/citations/23589287" target="\_blank">23589287</a>). Such effectors include PKN2, the RhoGTPases RAC1 and RHOA, Rho-kinases and phospholipase C that coordinate signaling pathways promoting calcium mobilization and actin-mediated cytoskeleton reorganization essential for cell migration and adhesion (PubMed:<a href="http://www.uniprot.org/citations/15123640" target="\_blank">15123640</a>).

#### Cellular Location

Cell membrane; Single-pass type I membrane protein. Cell projection, microvillus {ECO:0000250|UniProtKB:P15379}. Secreted Note=Colocalizes with actin in membrane protrusions at wounding edges Co-localizes with RDX, EZR and MSN in microvilli. Localizes to cholesterol-rich membrane-bound lipid raft domains {ECO:0000250|UniProtKB:P15379, ECO:0000269|PubMed:23589287}

#### Tissue Location

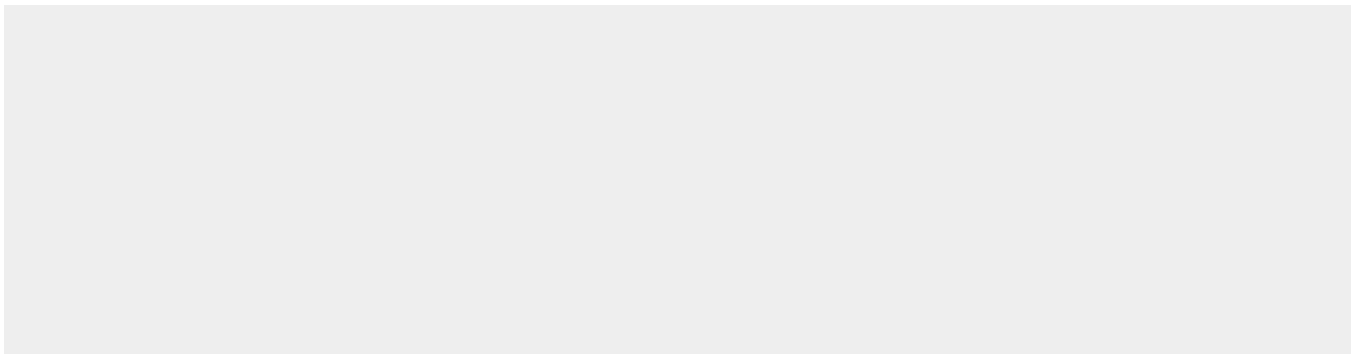
Detected in fibroblasts and urine (at protein level) (PubMed:25326458, PubMed:36213313, PubMed:37453717). Detected in placenta (at protein level) (PubMed:32337544). Isoform 10 (epithelial isoform) is expressed by cells of epithelium and highly expressed by carcinomas. Expression is repressed in neuroblastoma cells

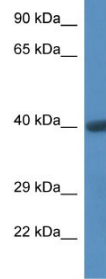
#### CD44 antibody - C-terminal region - Protocols

Provided below are standard protocols that you may find useful for product applications.

- [Western Blot](#)
- [Blocking Peptides](#)
- [Dot Blot](#)
- [Immunohistochemistry](#)
- [Immunofluorescence](#)
- [Immunoprecipitation](#)
- [Flow Cytometry](#)
- [Cell Culture](#)

#### CD44 antibody - C-terminal region - Images





WB Suggested Anti-CD44 Antibody Titration: 1.0  $\mu\text{g/ml}$   
Positive Control: Fetal Heart

#### **CD44 antibody - C-terminal region - References**

- Stamenkovic I., et al. Cell 56:1057-1062(1989).  
Harn H.-J., et al. Biochem. Biophys. Res. Commun. 178:1127-1134(1991).  
Stamenkovic I., et al. EMBO J. 10:343-348(1991).  
Dougherty G.J., et al. J. Exp. Med. 174:1-5(1991).  
Kugelman L.C., et al. J. Invest. Dermatol. 99:886-891(1992).