

CD34 antibody - C-terminal region
Rabbit Polyclonal Antibody
Catalog # AI14599

Specification

CD34 antibody - C-terminal region - Product Information

Application	IHC, WB
Primary Accession	O3C1E7
Other Accession	NM_001773 , NP_001764
Reactivity	Human, Mouse, Rat, Rabbit, Pig, Goat, Guinea Pig, Dog
Predicted	Human, Mouse, Rabbit, Pig, Guinea Pig, Dog
Host	Rabbit
Clonality	Polyclonal
Calculated MW	35kDa KDa

CD34 antibody - C-terminal region - Additional Information

Format

Liquid. Purified antibody supplied in 1x PBS buffer with 0.09% (w/v) sodium azide and 2% sucrose.

Reconstitution & Storage

Add 50 ul of distilled water. Final anti-CD34 antibody concentration is 1 mg/ml in PBS buffer with 2% sucrose. For longer periods of storage, store at 20°C. Avoid repeat freeze-thaw cycles.

Precautions

CD34 antibody - C-terminal region is for research use only and not for use in diagnostic or therapeutic procedures.

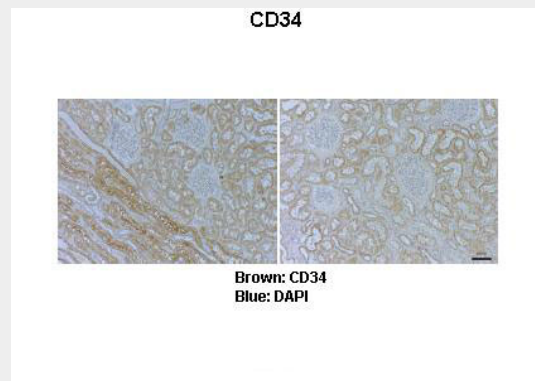
CD34 antibody - C-terminal region - Protein Information

CD34 antibody - C-terminal region - Protocols

Provided below are standard protocols that you may find useful for product applications.

- [Western Blot](#)
- [Blocking Peptides](#)
- [Dot Blot](#)
- [Immunohistochemistry](#)
- [Immunofluorescence](#)
- [Immunoprecipitation](#)
- [Flow Cytometry](#)
- [Cell Culture](#)

CD34 antibody - C-terminal region - Images

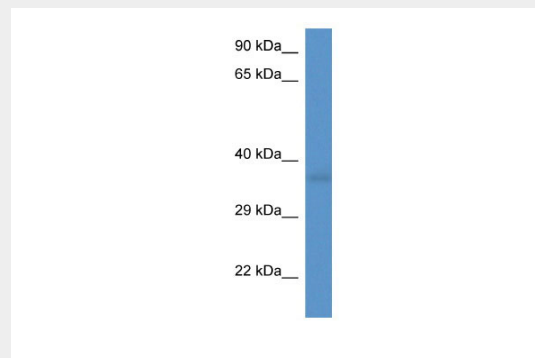


Sample Type : Human kidney

Primary Antibody Dilution : 1:1000

Secondary Antibody : Anti-rabbit-HRP Secondary Antibody Dilution : 1:5000 Color/Signal Descriptions : Brown: CD34 Blue: DAPI

Gene Name : CD34 Submitted by : Christina Theodoropoulos, Queensland Univ. of Technology



WB Suggested Anti-CD34 Antibody Titration: 1.0 µg/ml

Positive Control: Fetal Heart