

Casp3 Antibody - middle region
Rabbit Polyclonal Antibody
Catalog # AI14598**Specification**

Casp3 Antibody - middle region - Product Information

Application	WB
Primary Accession	P70677
Other Accession	NM_009810 , NP_033940
Reactivity	Human, Rat, Pig, Goat, Sheep, Horse, Bovine, Guinea Pig, Dog
Predicted	Human, Rat, Pig, Goat, Sheep, Horse, Bovine, Guinea Pig, Dog
Host	Rabbit
Clonality	Polyclonal
Calculated MW	31kDa KDa

Casp3 Antibody - middle region - Additional Information**Gene ID** 12367**Alias Symbol** **A830040C14Rik, AC-3, Apopain, CC3, CPP32, Caspase-3, Lice, Yama, mldy****Other Names**

Caspase-3, CASP-3, 3.4.22.56, Apopain, Cysteine protease CPP32, CPP-32, LICE, Protein Yama, SREBP cleavage activity 1, SCA-1, Caspase-3 subunit p17, Caspase-3 subunit p12, Casp3, Cpp32

Format

Liquid. Purified antibody supplied in 1x PBS buffer with 0.09% (w/v) sodium azide and 2% sucrose.

Reconstitution & Storage

Add 50 ul of distilled water. Final anti-Casp3 antibody concentration is 1 mg/ml in PBS buffer with 2% sucrose. For longer periods of storage, store at 20°C. Avoid repeat freeze-thaw cycles.

Precautions

Casp3 Antibody - middle region is for research use only and not for use in diagnostic or therapeutic procedures.

Casp3 Antibody - middle region - Protein Information**Name** Casp3**Synonyms** Cpp32 {ECO:0000303|PubMed:8934524}**Function**

Thiol protease that acts as a major effector caspase involved in the execution phase of apoptosis (PubMed:16469926, PubMed:8934524).

Following cleavage and activation by initiator caspases (CASP8, CASP9 and/or CASP10), mediates execution of apoptosis by catalyzing cleavage of many proteins (PubMed:16469926, PubMed:8934524). At the onset of apoptosis, it proteolytically cleaves poly(ADP-ribose) polymerase PARP1 at a '216-Asp-|-Gly-217' bond. Cleaves and activates sterol regulatory element binding proteins (SREBPs) between the basic helix-loop-helix leucine zipper domain and the membrane attachment domain. Cleaves and activates caspase-6, -7 and -9 (CASP6, CASP7 and CASP9, respectively). Cleaves and inactivates interleukin-18 (IL18) (By similarity). Triggers cell adhesion in sympathetic neurons through RET cleavage (By similarity). Cleaves IL-1 beta between an Asp and an Ala, releasing the mature cytokine which is involved in a variety of inflammatory processes (By similarity). Cleaves and inhibits serine/threonine- protein kinase AKT1 in response to oxidative stress (PubMed:12124386). Acts as an inhibitor of type I interferon production during virus- induced apoptosis by mediating cleavage of antiviral proteins CGAS, IRF3 and MAVS, thereby preventing cytokine overproduction (PubMed:30878284). Also involved in pyroptosis by mediating cleavage and activation of gasdermin-E (GSDME) (By similarity). Cleaves XRCC4 and phospholipid scramblase proteins XKR4, XKR8 and XKR9, leading to promote phosphatidylserine exposure on apoptotic cell surface (PubMed:25231987, PubMed:33725486).

Cellular Location

Cytoplasm {ECO:0000250|UniProtKB:P42574}.

Tissue Location

Highest expression in spleen, lung, liver, kidney and heart (PubMed:9038361). Lower expression in brain, skeletal muscle and testis (PubMed:9038361).

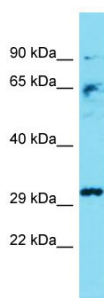
Casp3 Antibody - middle region - Protocols

Provided below are standard protocols that you may find useful for product applications.

- [Western Blot](#)
- [Blocking Peptides](#)
- [Dot Blot](#)
- [Immunohistochemistry](#)
- [Immunofluorescence](#)
- [Immunoprecipitation](#)
- [Flow Cytometry](#)
- [Cell Culture](#)

Casp3 Antibody - middle region - Images





Host: Rabbit

Target Name: Casp3

Sample Tissue: Mouse Liver lysates

Antibody Dilution: 1.0µg/ml

Casp3 Antibody - middle region - References

Juan T.S.-C., et al. *Oncogene* 13:749-755(1996).

Mukasa T., et al. *Biochem. Biophys. Res. Commun.* 231:770-774(1997).

van de Craen M., et al. *FEBS Lett.* 403:61-69(1997).

Fernandes-Alnemri T., et al. Submitted (MAY-1997) to the EMBL/GenBank/DDBJ databases.

Denis F., et al. Submitted (JUL-1996) to the EMBL/GenBank/DDBJ databases.