

HIST1H2AE antibody - middle region
Rabbit Polyclonal Antibody
Catalog # AI14597**Specification**

HIST1H2AE antibody - middle region - Product Information

Application	WB
Primary Accession	O7L7L0
Other Accession	NM_021052 , NP_066390
Reactivity	Human, Rat, Pig, Bovine
Predicted	Human, Rat, Pig, Bovine
Host	Rabbit
Clonality	Polyclonal
Calculated MW	14kDa KDa

HIST1H2AE antibody - middle region - Additional Information**Gene ID** 92815**Alias Symbol** H2A.1, H2A.2, H2A/a, H2AFA, HIST1H2AB
Other Names
Histone H2A type 3, HIST3H2A**Format**

Liquid. Purified antibody supplied in 1x PBS buffer with 0.09% (w/v) sodium azide and 2% sucrose.

Reconstitution & Storage

Add 50 ul of distilled water. Final anti-HIST1H2AE antibody concentration is 1 mg/ml in PBS buffer with 2% sucrose. For longer periods of storage, store at 20°C. Avoid repeat freeze-thaw cycles.

Precautions

HIST1H2AE antibody - middle region is for research use only and not for use in diagnostic or therapeutic procedures.

HIST1H2AE antibody - middle region - Protein Information**Name** H2AC25 ([HGNC:20507](#))**Function**

Core component of nucleosome. Nucleosomes wrap and compact DNA into chromatin, limiting DNA accessibility to the cellular machineries which require DNA as a template. Histones thereby play a central role in transcription regulation, DNA repair, DNA replication and chromosomal stability. DNA accessibility is regulated via a complex set of post-translational modifications of histones, also called histone code, and nucleosome remodeling.

Cellular Location

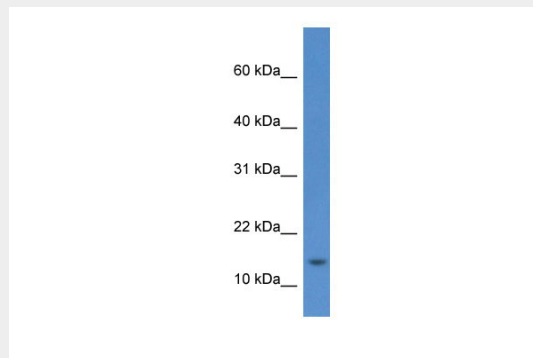
Nucleus. Chromosome.

HIST1H2AE antibody - middle region - Protocols

Provided below are standard protocols that you may find useful for product applications.

- [Western Blot](#)
- [Blocking Peptides](#)
- [Dot Blot](#)
- [Immunohistochemistry](#)
- [Immunofluorescence](#)
- [Immunoprecipitation](#)
- [Flow Cytometry](#)
- [Cell Culture](#)

HIST1H2AE antibody - middle region - Images



WB Suggested Anti-HIST1H2AE Antibody Titration: 1.0 μ g/ml
Positive Control: RPMI-8226 Whole Cell

HIST1H2AE antibody - middle region - References

- Marzluff W.F., et al. Genomics 80:487-498(2002).
Ota T., et al. Nat. Genet. 36:40-45(2004).
Gregory S.G., et al. Nature 441:315-321(2006).
Mural R.J., et al. Submitted (JUL-2005) to the EMBL/GenBank/DDBJ databases.
Aihara H., et al. Genes Dev. 18:877-888(2004).