

**CYCS antibody - N-terminal region**  
**Rabbit Polyclonal Antibody**  
**Catalog # AI14596****Specification**

---

**CYCS antibody - N-terminal region - Product Information**

Application	IF, WB
Primary Accession	<a href="#">P99999</a>
Other Accession	<a href="#">NM_018947</a> , <a href="#">NP_061820</a>
Reactivity	Human, Mouse, Rat, Rabbit, Pig, Goat, Sheep, Horse, Bovine, Dog
Predicted Host	Human, Mouse, Chicken, Horse
Clonality	Rabbit
Calculated MW	Polyclonal 12kDa KDa

**CYCS antibody - N-terminal region - Additional Information****Gene ID** 54205**Alias Symbol** CYC, HCS, THC4  
**Other Names**  
Cytochrome c, CYCS, CYC**Format**

Liquid. Purified antibody supplied in 1x PBS buffer with 0.09% (w/v) sodium azide and 2% sucrose.

**Reconstitution & Storage**

Add 50 ul of distilled water. Final anti-CYCS antibody concentration is 1 mg/ml in PBS buffer with 2% sucrose. For longer periods of storage, store at 20°C. Avoid repeat freeze-thaw cycles.

**Precautions**

CYCS antibody - N-terminal region is for research use only and not for use in diagnostic or therapeutic procedures.

**CYCS antibody - N-terminal region - Protein Information****Name** CYCS**Synonyms** CYC**Function**

Electron carrier protein. The oxidized form of the cytochrome c heme group can accept an electron from the heme group of the cytochrome c1 subunit of cytochrome reductase. Cytochrome c then transfers this electron to the cytochrome oxidase complex, the final protein carrier in the mitochondrial electron-transport chain.

**Cellular Location**

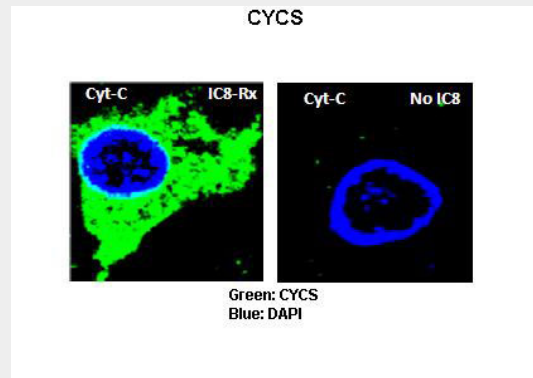
Mitochondrion intermembrane space. Note=Loosely associated with the inner membrane

### CYCS antibody - N-terminal region - Protocols

Provided below are standard protocols that you may find useful for product applications.

- [Western Blot](#)
- [Blocking Peptides](#)
- [Dot Blot](#)
- [Immunohistochemistry](#)
- [Immunofluorescence](#)
- [Immunoprecipitation](#)
- [Flow Cytometry](#)
- [Cell Culture](#)

### CYCS antibody - N-terminal region - Images



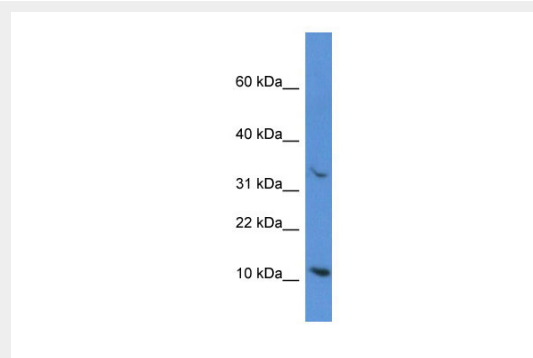
Sample Type : Rat thyrocytes-FRTL-5

Primary Antibody Dilution : 1:100

Secondary Antibody : Anti-rabbit-FITC Secondary Antibody Dilution : 1:100 Color/Signal

Descriptions : Green: CYCS Blue: DAPI

Gene Name : CYCS Submitted by : Syed A Morshed, Mount Sinai School of Medicine and James J Peters VA Medical Center



WB Suggested Anti-CYCS Antibody Titration: 1.0 µg/ml

Positive Control: OVCAR-3 Whole Cell

### CYCS antibody - N-terminal region - References

Evans M.J., et al. Proc. Natl. Acad. Sci. U.S.A. 85:9625-9629(1988).

Kalnine N., et al. Submitted (MAY-2003) to the EMBL/GenBank/DDBJ databases.

Ota T.,et al.Nat. Genet. 36:40-45(2004).  
Bechtel S.,et al.BMC Genomics 8:399-399(2007).  
Hillier L.W.,et al.Nature 424:157-164(2003).