

CTSK antibody - middle region
Rabbit Polyclonal Antibody
Catalog # AI14590

Specification

CTSK antibody - middle region - Product Information

Application	WB
Primary Accession	P43235
Other Accession	NM_000396 , NP_000387
Reactivity	Human, Mouse, Rat, Rabbit, Goat, Horse, Bovine, Guinea Pig, Dog
Predicted Host	Human, Mouse
Clonality	Rabbit
Calculated MW	Polyclonal 37kDa KDa

CTSK antibody - middle region - Additional Information

Gene ID 1513

Alias Symbol CTSO2, CTSO, CTSO1, CTSO2, MGC23107, PKND, PYCD

Other Names

Cathepsin K, 3.4.22.38, Cathepsin O, Cathepsin O2, Cathepsin X, CTSK, CTSO, CTSO2

Format

Liquid. Purified antibody supplied in 1x PBS buffer with 0.09% (w/v) sodium azide and 2% sucrose.

Reconstitution & Storage

Add 50 ul of distilled water. Final anti-CTSK antibody concentration is 1 mg/ml in PBS buffer with 2% sucrose. For longer periods of storage, store at 20°C. Avoid repeat freeze-thaw cycles.

Precautions

CTSK antibody - middle region is for research use only and not for use in diagnostic or therapeutic procedures.

CTSK antibody - middle region - Protein Information

Name CTSK

Synonyms CTSO, CTSO2

Function

Thiol protease involved in osteoclastic bone resorption and may participate partially in the disorder of bone remodeling. Displays potent endoprotease activity against fibrinogen at acid pH. May play an important role in extracellular matrix degradation. Involved in the release of thyroid hormone thyroxine (T4) by limited proteolysis of TG/thyroglobulin in the thyroid follicle lumen (PubMed:11082042).

Cellular Location

Lysosome. Secreted. Apical cell membrane; Peripheral membrane protein; Extracellular side.
Note=Localizes to the lumen of thyroid follicles and to the apical membrane of thyroid epithelial cells

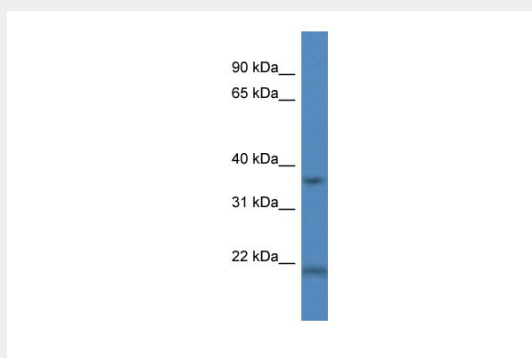
Tissue Location

Predominantly expressed in osteoclasts (bones) (PubMed:7805878). Expressed in thyroid epithelial cells (PubMed:11082042).

CTSK antibody - middle region - Protocols

Provided below are standard protocols that you may find useful for product applications.

- [Western Blot](#)
- [Blocking Peptides](#)
- [Dot Blot](#)
- [Immunohistochemistry](#)
- [Immunofluorescence](#)
- [Immunoprecipitation](#)
- [Flow Cytometry](#)
- [Cell Culture](#)

CTSK antibody - middle region - Images

WB Suggested Anti-CTSK Antibody Titration: 1.0 $\mu\text{g/ml}$
Positive Control: Fetal Liver

CTSK antibody - middle region - References

Shi G.-P., et al. FEBS Lett. 357:129-134(1995).
Inaoka T., et al. Biochem. Biophys. Res. Commun. 206:89-96(1995).
Li Y., et al. J. Bone Miner. Res. 10:1197-1202(1995).
Broemme D., et al. Biol. Chem. Hoppe-Seyler 376:379-384(1995).
Ebert L., et al. Submitted (JUN-2004) to the EMBL/GenBank/DDBJ databases.