

**PIGC antibody - C-terminal region**  
**Rabbit Polyclonal Antibody**  
**Catalog # AI14581**

**Specification**

---

**PIGC antibody - C-terminal region - Product Information**

Application	WB
Primary Accession	<a href="#">O92535</a>
Other Accession	<a href="#">NM_002642</a> , <a href="#">NP_002633</a>
Reactivity	Human, Mouse, Rat, Rabbit, Pig, Horse, Bovine, Guinea Pig, Dog
Predicted Host	Human, Mouse, Rat, Pig, Bovine, Dog
Clonality	Rabbit
Calculated MW	Polyclonal 33kDa KDa

**PIGC antibody - C-terminal region - Additional Information**

**Gene ID** 5279

**Alias Symbol** **GPI2, MGC2049**

**Other Names**

Phosphatidylinositol N-acetylglucosaminyltransferase subunit C, 2.4.1.198,  
Phosphatidylinositol-glycan biosynthesis class C protein, PIG-C, PIGC, GPI2

**Format**

Liquid. Purified antibody supplied in 1x PBS buffer with 0.09% (w/v) sodium azide and 2% sucrose.

**Reconstitution & Storage**

Add 50 ul of distilled water. Final anti-PIGC antibody concentration is 1 mg/ml in PBS buffer with 2% sucrose. For longer periods of storage, store at 20°C. Avoid repeat freeze-thaw cycles.

**Precautions**

PIGC antibody - C-terminal region is for research use only and not for use in diagnostic or therapeutic procedures.

**PIGC antibody - C-terminal region - Protein Information**

**Name** PIGC ([HGNC:8960](#))

**Synonyms** GPI2

**Function**

Part of the glycosylphosphatidylinositol-N- acetylglucosaminyltransferase (GPI-GnT) complex that catalyzes the transfer of N-acetylglucosamine from UDP-N-acetylglucosamine to phosphatidylinositol and participates in the first step of GPI biosynthesis.

**Cellular Location**

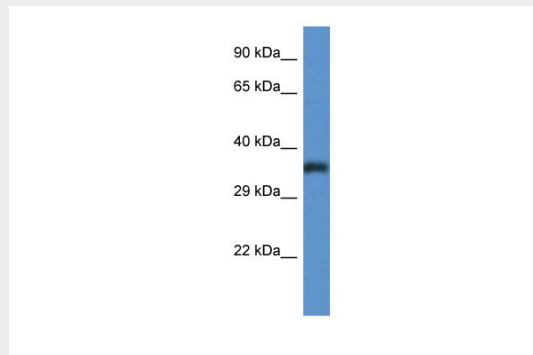
Endoplasmic reticulum membrane; Multi-pass membrane protein

### PIGC antibody - C-terminal region - Protocols

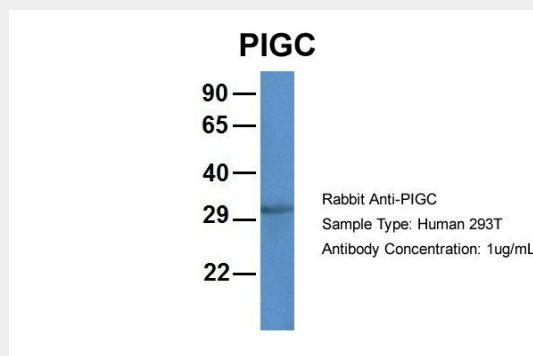
Provided below are standard protocols that you may find useful for product applications.

- [Western Blot](#)
- [Blocking Peptides](#)
- [Dot Blot](#)
- [Immunohistochemistry](#)
- [Immunofluorescence](#)
- [Immunoprecipitation](#)
- [Flow Cytometry](#)
- [Cell Culture](#)

### PIGC antibody - C-terminal region - Images



WB Suggested Anti-PIGC Antibody Titration: 1.0 µg/ml  
Positive Control: Fetal Lung



Host:Rabbit

Target Name:PIGC

Sample Tissue:Human 293T

Antibody Dilution: 1.0µg/mlPIGC is strongly supported by BioGPS gene expression data to be expressed in Human HEK293T cells

### PIGC antibody - C-terminal region - References

Inoue N.,et al.Biochem. Biophys. Res. Commun. 226:193-199(1996).

Hong Y.,et al.Genomics 44:347-349(1997).

Kalnine N.,et al.Submitted (MAY-2003) to the EMBL/GenBank/DDBJ databases.

Ebert L., et al. Submitted (MAY-2004) to the EMBL/GenBank/DDBJ databases.  
Gregory S.G., et al. Nature 441:315-321(2006).